

NTP Nonneoplastic Lesion Atlas

Tongue – Squamous Cyst

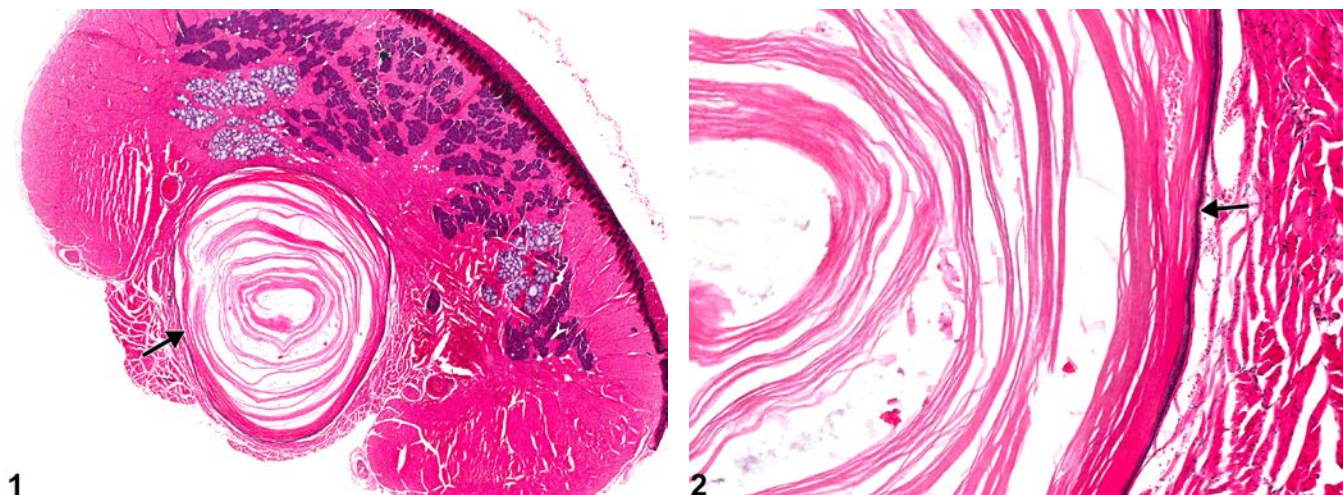


Figure Legend: **Figure 1** Tongue - Squamous cyst in a male F344/N rat from a subchronic study. A cyst filled with keratin (arrow) is present in the tongue. **Figure 2** Tongue - Squamous cyst in a male F344/N rat from a subchronic study (higher magnification of Figure 1). The cyst is lined by flattened squamous epithelium (arrow).

Comment: Squamous cysts (Figure 1, Figure 2) may be found in the tongue or gingiva or may be associated with the teeth. These cysts are lined by keratinized squamous epithelium, and the lumen usually contains keratinized material. In the tongue, squamous cysts are benign congenital anomalies and are considered incidental lesions.

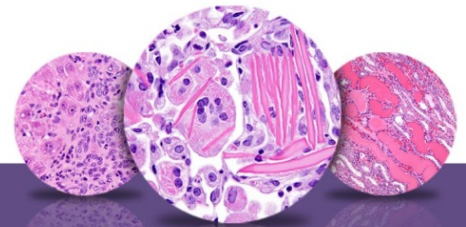
Recommendation: Squamous cysts should be diagnosed but not graded unless the incidence is treatment related.

Reference:

Bertram TA, Markovits JE, Juliana MM. 1996. Non-proliferative lesions of the alimentary canal in rats GI-1. In: Guides for Toxicologic Pathology. STP/ARP/AFIP, Washington, DC, 1-16.
Full-Text: <https://www.toxpath.org/ssdnc/GINonproliferativeRat.pdf>

Authors:

Linda H. Kooistra, DVM, PhD, DACVP
Pathologist
Charles River Laboratories, Inc.
Research Triangle Park, NC



NTP Nonneoplastic Lesion Atlas

Tongue – Squamous Cyst

Authors:

Abraham Nyska, DVM, Diplomate ECVP, Fellow IATP
Expert in Toxicologic Pathology
Visiting Full Professor of Pathology
Sackler School of Medicine, Tel Aviv University
Timrat Israel