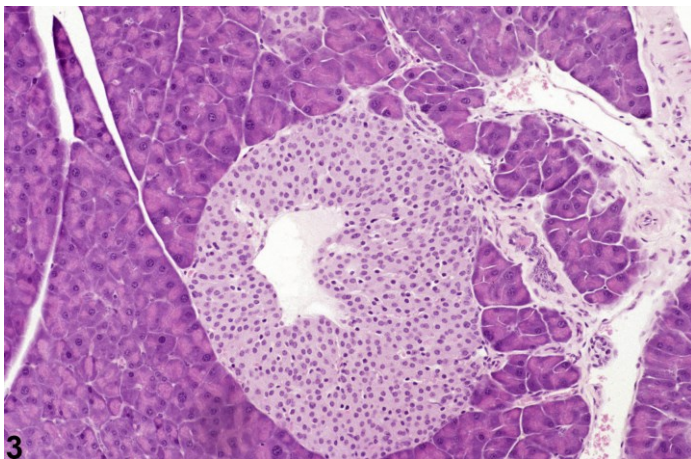
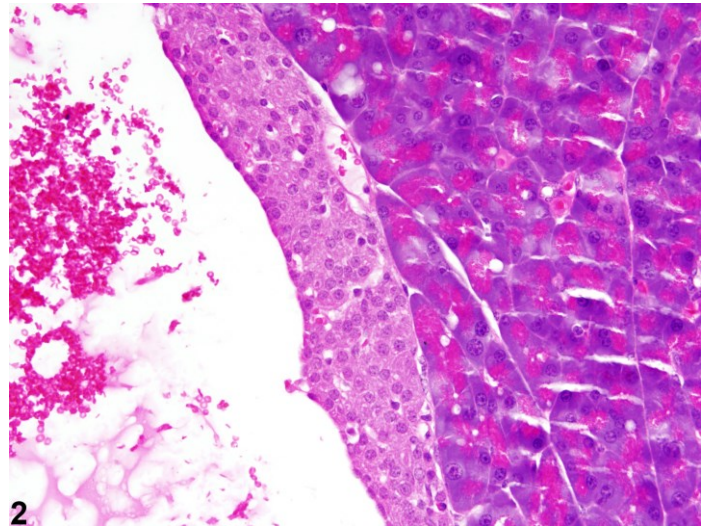
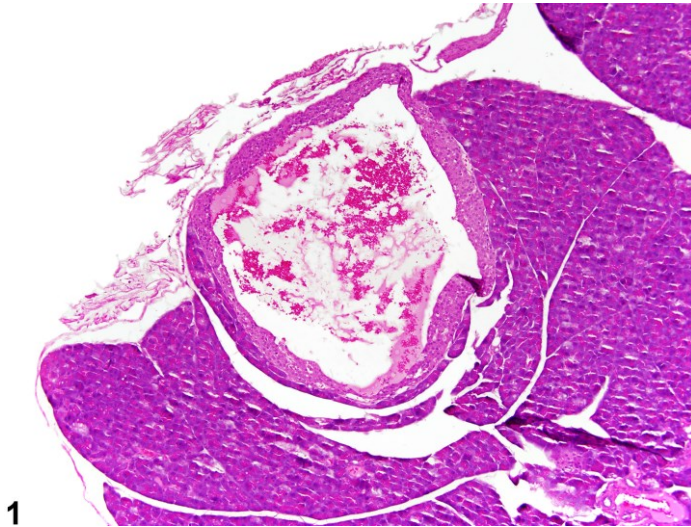


# NTP Nonneoplastic Lesion Atlas

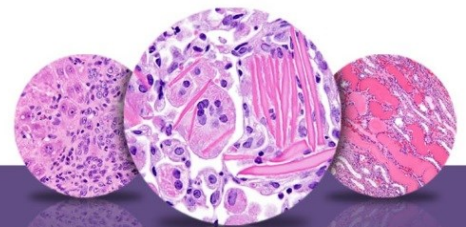
## *Pancreatic Islet – Cyst*



**Figure Legend:** **Figure 1** Pancreatic islet - cyst. The central portion of this islet is markedly dilated and is considered a cyst that contains some erythrocytes in a male B6C3F1 mouse from a chronic study.

**Figure 2** Pancreatic islet - cyst. High magnification of the cystic islet in Figure 1 in a male B6C3F1 mouse from a chronic study. **Figure 3** Pancreatic islet - cyst. A cyst with an irregular contour is present in this islet in a male B6C3F1 mouse from a chronic study.

**Comment:** A cyst present in only one islet in a section of pancreas is distinguished from angiectasis based on its large size, lack of an endothelial lining, and the absence of dilation of other vascular spaces (Figure 1 and Figure 2).



# NTP Nonneoplastic Lesion Atlas

## *Pancreatic Islet – Cyst*

**Recommendation:** Islet cysts are uncommon but should be documented when present. A severity grade is not required.

**References:**

None available.

**Authors:**

Robert R. Maronpot, DVM, MS, MPH, DACVP, DABT, FIATP  
Senior Pathologist  
Experimental Pathology Laboratories, Inc.  
Research Triangle Park, NC

Georgette D. Hill, DVM. PhD  
Toxicologic Pathologist/Assistant Pathology Program Manager  
Integrated Laboratory Systems, Inc.  
Research Triangle Park, NC