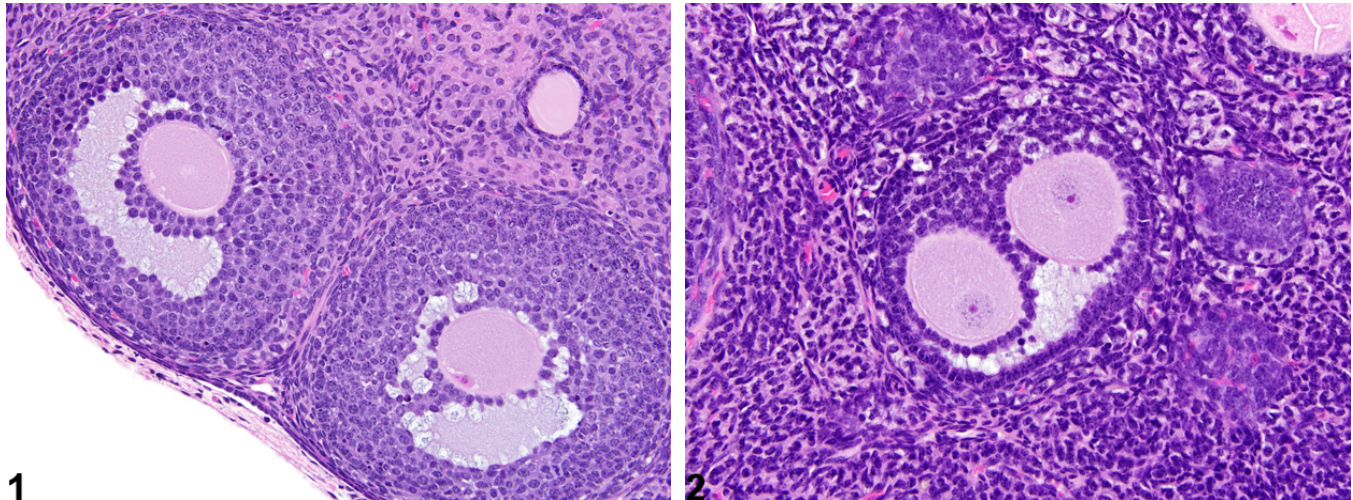




NTP Nonneoplastic Lesion Atlas

Ovary, Follicle – Polyovular



1

2

Figure Legend: **Figure 1** Ovary - Normal in a female B6C3F1/N mouse from a subchronic study. The two adjacent follicles are distinct; compare with Figure 2. **Figure 2** Ovary, Follicle - Polyovular in a female B6C3F1/N mouse from a subchronic study. One follicle contains two oocytes, in contrast to the adjacent follicles shown in Figure 1.

Comments: Individual follicles may be closely adjacent to each other (Figure 1). Each of these follicles contains one oocyte. A polyovular follicle comprises a single follicle containing two oocytes, each with its own nucleus, zona pellucida, and layer of granulosa cells (Figure 2). Polyovular follicles are occasionally seen as a background finding but have been recorded as a treatment-related finding in mice in one subchronic NTP study.

Recommendation: Ovary, Follicle – Polyovular should be diagnosed when present, but severity grading is not necessary.

Reference:

Maekawa A, Maita K, Harleman JH. 1996. Changes in the ovary. In: Pathobiology of the Aging Mouse (Mohr U, Dungworth DL, Capen CC, Carlton WW, Sundberg JP, Ward JM, eds). ILSI Press, Washington, DC, 451-467.



NTP Nonneoplastic Lesion Atlas

Ovary, Follicle – Polyovular

Authors:

Gabrielle Willson, BVMS, DipRCPath, FRCPath, MRCVS
Senior Pathologist
Experimental Pathology Laboratories, Inc.
Research Triangle Park, NC

Karen Y. Cimon, DVM, MS
Senior Pathologist
Experimental Pathology Laboratories, Inc.
Research Triangle Park, NC