

NTP Nonneoplastic Lesion Atlas

Uterus – Adenomyosis

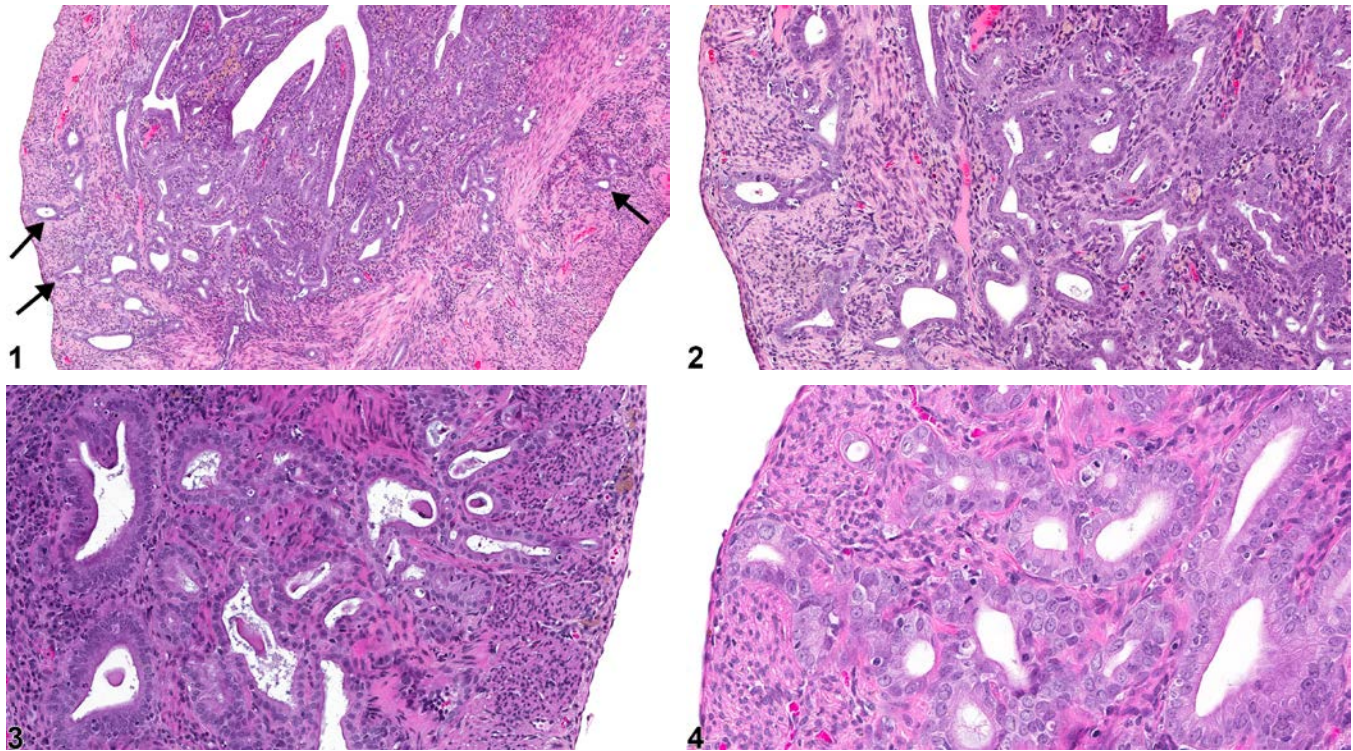
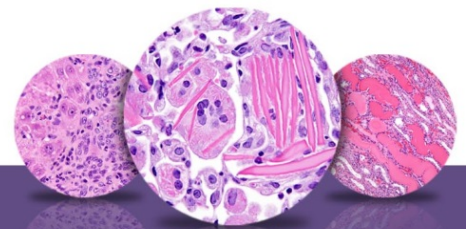


Figure Legend: **Figure 1** Uterus - Adenomyosis in a female Harlan Sprague-Dawley rat from a chronic study. Glands are adjacent to the serosal surface of the myometrium (arrows). **Figure 2** Uterus - Adenomyosis in a female Harlan Sprague-Dawley rat from a chronic study (higher magnification of Figure 1). There are well-differentiated glands within the myometrium. **Figure 3** Uterus - Adenomyosis in a female Harlan Sprague-Dawley rat from a chronic study. Endometrial glands and stroma are evident within the myometrium. **Figure 4** Uterus - Adenomyosis in a female Harlan Sprague-Dawley rat from a chronic study. There are well-differentiated glands within the myometrium.

Comment: Adenomyosis (Figure 1, Figure 2, Figure 3, and Figure 4) is the presence of normal or hyperplastic endometrial glands and stroma that extend into the myometrium. Occasionally epithelial cells can extend onto the serosal surface of the uterus. Hormonal imbalance is a key factor. It is more common in some strains of mice (B6C3F1) than in rats and is more common in aged mice. It is important to differentiate adenomyosis from neoplasms. Adenomyosis has no atypia of the epithelial cells, which is a useful distinguishing feature. Adenomyosis may be differentiated from adenocarcinoma



NTP Nonneoplastic Lesion Atlas

Uterus – Adenomyosis

by examining the epithelial cells and by the presence of normal uterine stroma. Malignant epithelial cells of adenocarcinomas exhibit cellular pleomorphism and often are multilayered. Adenomyosis should not be described as endometriosis, which is diagnosed only in primates (in endometriosis, the glands spread to the peritoneal cavity).

Recommendation: Uterus - Adenomyosis should be diagnosed and graded whenever present.

References:

Davis BJ, Dixon D, Herbert RA. 1999. Ovary, oviduct, uterus, cervix and vagina. In: Pathology of the Mouse: Reference and Atlas (Maronpot RR, Boorman GA, Gaul BW, eds). Cache River Press, Vienna, IL, 409-444.

Greaves P. 2012. Female genital tract. In: Histopathology of Preclinical Toxicity Studies: Interpretation and Relevance in Drug Safety Evaluation, 4th ed. Elsevier, Amsterdam, 667-724.

Leininger JR, Jokinen MP. 1990. Oviduct, uterus and vagina. In: Pathology of the Fischer Rat (Boorman GA, Eustis SL, Elwell MR, Montgomery CA, MacKenzie WF, eds). Academic Press, San Diego, CA, 443-459.

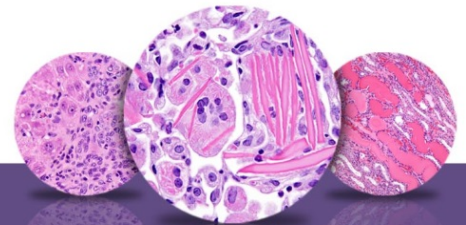
Maekawa A, Maita K. 1996. Susceptibility of the female genital system to toxic substances. In: Pathobiology of the Aging Mouse (Mohr U, Dungworth DL, Capen CC, Carlton WW, Sundberg JP, Ward JM, eds). ILSI Press, Washington, DC, 481-493.

National Toxicology Program. 2000. NTP TR-484. Toxicology and Carcinogenesis Studies 2-Butoxyethanol (CAS No. 111-76-2) in F344/N Rats and B6C3F₁ Mice (Inhalation Studies). NTP, Research Triangle Park, NC.

Abstract: <http://ntp.niehs.nih.gov/go/9770>

National Toxicology Program. 2001. NTP TR-501. Toxicology and Carcinogenesis Studies of *p,p'*-Dichlorodiphenyl Sulfone (CAS No. 80-07-9) in F344/N Rats and B6C3F₁ Mice (Feed Studies). NTP, Research Triangle Park, NC.

Abstract: <http://ntp.niehs.nih.gov/go/14880>



NTP Nonneoplastic Lesion Atlas

Uterus – Adenomyosis

Authors:

Gabrielle Willson, BVMS, DipRCPath, FRCPath, MRCVS
Senior Pathologist
Experimental Pathology Laboratories, Inc.
Research Triangle Park, NC

Karen Y. Cimon, DVM, MS
Senior Pathologist
Experimental Pathology Laboratories, Inc.
Research Triangle Park, NC