



NTP Nonneoplastic Lesion Atlas

Thymus – Ectopic Tissue

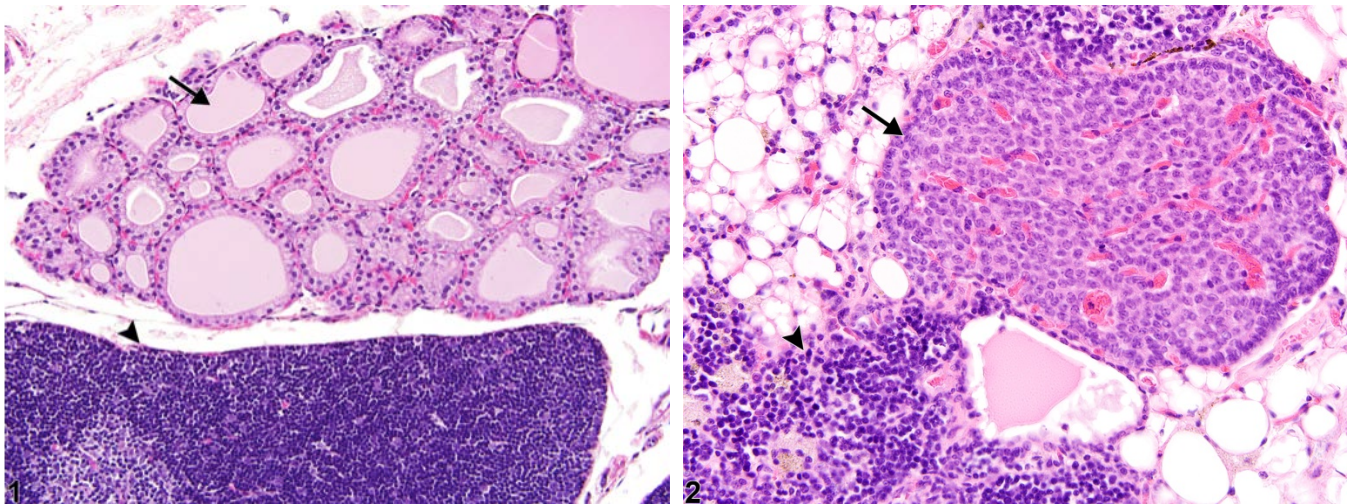


Figure Legend: **Figure 1** Thymus - Ectopic tissue, Thyroid in a control male Harlan Sprague-Dawley rat from a subchronic study. A structurally normal fragment of thyroid tissue (arrow) is adjacent to the thymus (arrowhead). **Figure 2** Thymus - Ectopic tissues, Parathyroid in a treated female F344/N rat from a chronic study. Ectopic parathyroid tissue (arrow) extends from the surface of this involuted thymus (arrowhead).

Comment: Ectopic tissue is a fragment of structurally normal tissue (e.g., thyroid, parathyroid) in an abnormal location. This lesion can be congenital or the result of an injury. Ectopic thyroid tissue may occur in and/or adjacent to the thymus of rodents. The thyroid tissue shown in Figure 1 consists of epithelial-lined, colloid-containing follicles separated by a fine fibrovascular stroma. Thyroid C cells may occasionally be found between the follicular epithelium and the basement membrane of the thyroid follicles. Ectopic parathyroid tissue occasionally occurs either adjacent to or embedded in the thymic capsule of rats and/or mice. The parathyroid tissue shown in Figure 2 consists of densely packed, highly folded, branching cords and clusters of polygonal cells separated by a thin fibrovascular stroma. Ectopic parathyroid tissue is an uncommon, incidental finding, although when present it should be distinguished from thymoma or other possible early or small tumors.

Recommendation: Ectopic tissue is typically an incidental finding in or adjacent to the thymus of rodents. When this lesion is present it should be diagnosed but not graded. The type of ectopic tissue



NTP Nonneoplastic Lesion Atlas

Thymus – Ectopic Tissue

present (e.g., thyroid, parathyroid) should be included in the diagnosis as a modifier (e.g., Thymus – Ectopic tissue, Thyroid).

References:

Brayton C. 2007. Spontaneous diseases in commonly used mouse strains. In: *The Mouse in Biomedical Research: Diseases*, 2nd ed (Fox JG, Barthold S, Davisson M, Newcomer CE, Quimby FW, Smith A, eds). Academic Press, Burlington, MA, 676.

National Toxicology Program. 1983. NTP TR-248. Carcinogenesis Studies of 4,4'-Methylenedianiline Dihydrochloride (CAS No. 13552-44-8) in F344/N Rats and B6C3F1 Mice (Drinking Water Studies). NTP, Research Triangle Park, NC.

Abstract: <http://ntp.niehs.nih.gov/go/7104>

Pearse G. 2006. Histopathology of the thymus. *Toxicol Pathol* 34:515-547.

Full Text: <http://tpx.sagepub.com/content/34/5/515.long>

Stefanski SA, Elwell MR, Stromberg PC. 1990. Spleen, lymph nodes, and thymus. In: *Pathology of the Fischer Rat: Reference and Atlas* (Boorman GA, Eustis SL, Elwell MR, Montgomery CA, MacKenzie WF, eds). Academic Press, San Diego, 369-394.

Ward JM, Mann PC, Morishima H, Frith CH. 1999. Thymus, spleen, and lymph nodes. In: *Pathology of the Mouse* (Maronpot RR, ed). Cache River Press, Vienna, IL, 333-360.

Authors:

Kristen Hobbie, DVM, PhD
Principal Pathologist
Huntingdon Life Sciences
Peterborough, UK

Susan A. Elmore, MS, DVM, DACVP, DABT, FIATP
Staff Scientist, NTP Pathologist
NTP Pathology Group
National Toxicology Program
National Institute of Environmental Health Sciences
Research Triangle Park, NC

Holly M. Kolenda-Roberts, DVM, PhD, DACVP
Veterinary Pathologist
SNBL USA
Everett, WA