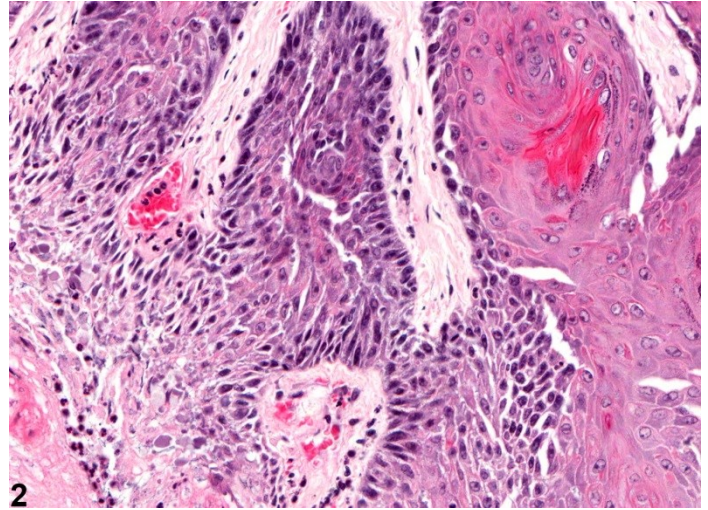


NTP Nonneoplastic Lesion Atlas

Penis, Epithelium – Hyperplasia



1



2

Figure Legend: **Figure 1** Penis, Epithelium - Hyperplasia. Arrow indicates papillary proliferation of squamous epithelium in a male B6C3F1 mouse from a chronic study. **Figure 2** Penis, Epithelium - Hyperplasia. Higher magnification of Figure 1 showing the hyperplastic squamous epithelium in a male B6C3F1 mouse from a chronic study.

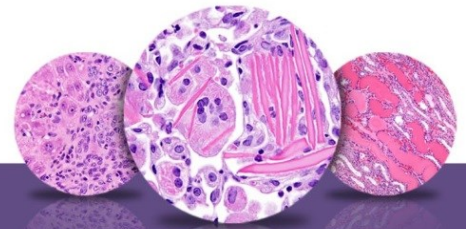
Comments: Hyperplasia of the mucosa is characterized by proliferation of squamous epithelium in the form of papillary folds (arrow, Figure 1). It is an uncommon incidental finding and is unlikely to be associated with chemical administration.

Recommendation: This lesion should be diagnosed and given a severity grade.

Authors:

Dianne M. Creasy, PhD, Dip RCPATH, FRCPath
Dianne Creasy Consulting LLC
Pipersville, PA

Robert R. Maronpot, DVM, MS, MPH, DACVP, DABT, FIATP
Senior Pathologist
Experimental Pathology Laboratories, Inc.
Research Triangle Park, NC



NTP Nonneoplastic Lesion Atlas

Penis, Epithelium – Hyperplasia

Authors:

Dipak K. Giri, DVM, PHD, DACVP
Toxicologic Pathologist
Integrated Laboratory Systems, Inc.
Research Triangle Park, NC