

NTP Nonneoplastic Lesion Atlas

Preputial Gland – Metaplasia, Osseous

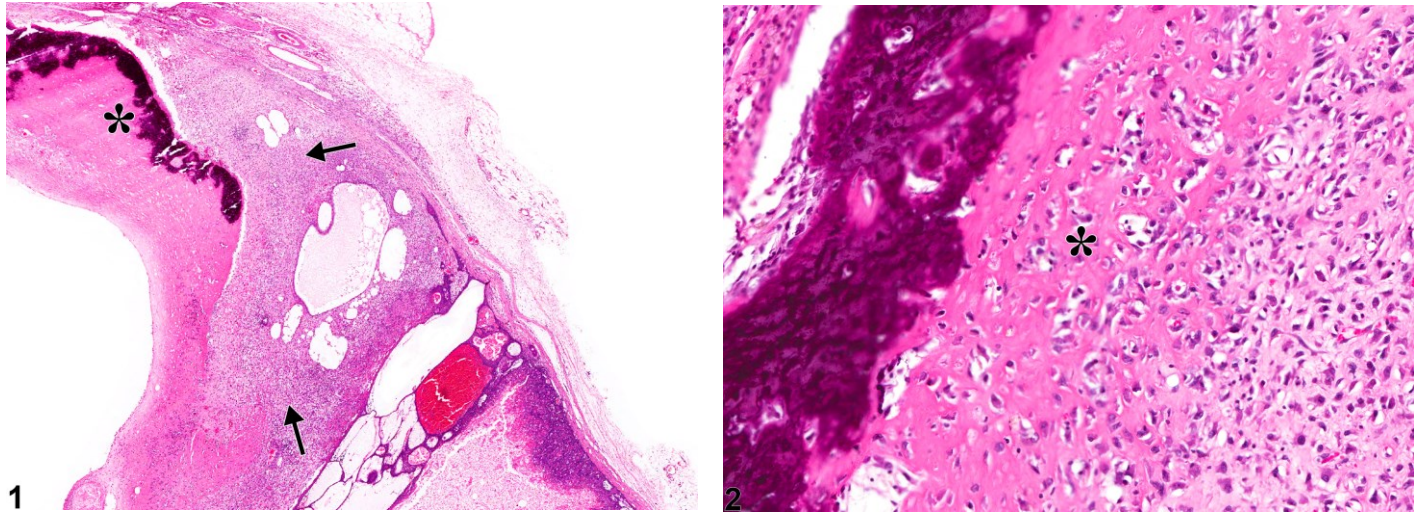


Figure Legend: **Figure 1** Preputial Gland - Metaplasia, Osseous. Asterisk indicates osteoid formation; arrows indicate connective tissue stroma in a male F344/N rat from a chronic study. Deep basophilic material is mineralized osteoid. **Figure 2** Preputial Gland - Metaplasia, Osseous. Asterisk indicates osteoid formation with deep basophilic staining of mineralized osteoid in a male F344/N rat from a chronic study.

Comments: Osseous metaplasia characterized by formation of osteoid (asterisk, Figure 2), and mineralized osteoid that replaces the glandular parenchymal is an uncommon observation and likely an incidental finding.

Recommendation: Osseous metaplasia should be recorded and graded. If both glands are affected, the diagnosis should be qualified as bilateral and the severity based on the more severely affected gland.

References:

Boorman GA, Elwell MR, Mitsumori K. 1990. Male accessory sex glands, penis, and scrotum. In: Pathology of the Fischer Rat: Reference and Atlas (Boorman GA, Eustis SL, Elwell MR, Montgomery CA, MacKenzie WF, eds). Academic Press, San Diego, 419-428.
Abstract: <http://www.ncbi.nlm.nih.gov/nlmcatalog/9002563>



NTP Nonneoplastic Lesion Atlas

Preputial Gland – Metaplasia, Osseous

References:

Gordon LR, Majka JA, Boorman GA. 1996. Spontaneous nonneoplastic and neoplastic lesions and experimentally induced neoplasms of the testes and accessory sex glands. In: Pathobiology of the Aging Mouse, Vol 1 (Mohr U, Dungworth DL, Capen CC, Carlton WW, Sundberg JP, Ward JM, eds). ILSI Press, Washington, DC, 421-441.

Abstract: <http://catalog.hathitrust.org/Record/008994685>

Rudmann D, Cardiff R, Chouinard L, Goodman D, Kuttler K, Marxfeld H, Molinolo A, Treumann S, Yoshizawa K. 2012. Proliferative and nonproliferative lesions of the rat and mouse mammary, Zymbal's, preputial, and clitoral glands. Toxicol Pathol 40:7S-39S.

Abstract: <http://www.ncbi.nlm.nih.gov/pubmed/22949413>

Authors:

Dianne M. Creasy, PhD, Dip RCPATH, FRCPath
Dianne Creasy Consulting LLC
Pipersville, PA

Robert R. Maronpot, DVM, MS, MPH, DACVP, DABT, FIATP
Senior Pathologist
Experimental Pathology Laboratories, Inc.
Research Triangle Park, NC

Gordon Flake, MD
Staff Scientist
NTP Pathologist
Cellular and Molecular Pathology Branch
National Institute of Environmental Health Sciences
Research Triangle Park, NC

Dipak K. Giri, DVM, PhD, DACVP
Toxicologic Pathologist
Integrated Laboratory Systems, Inc.
Research Triangle Park, NC