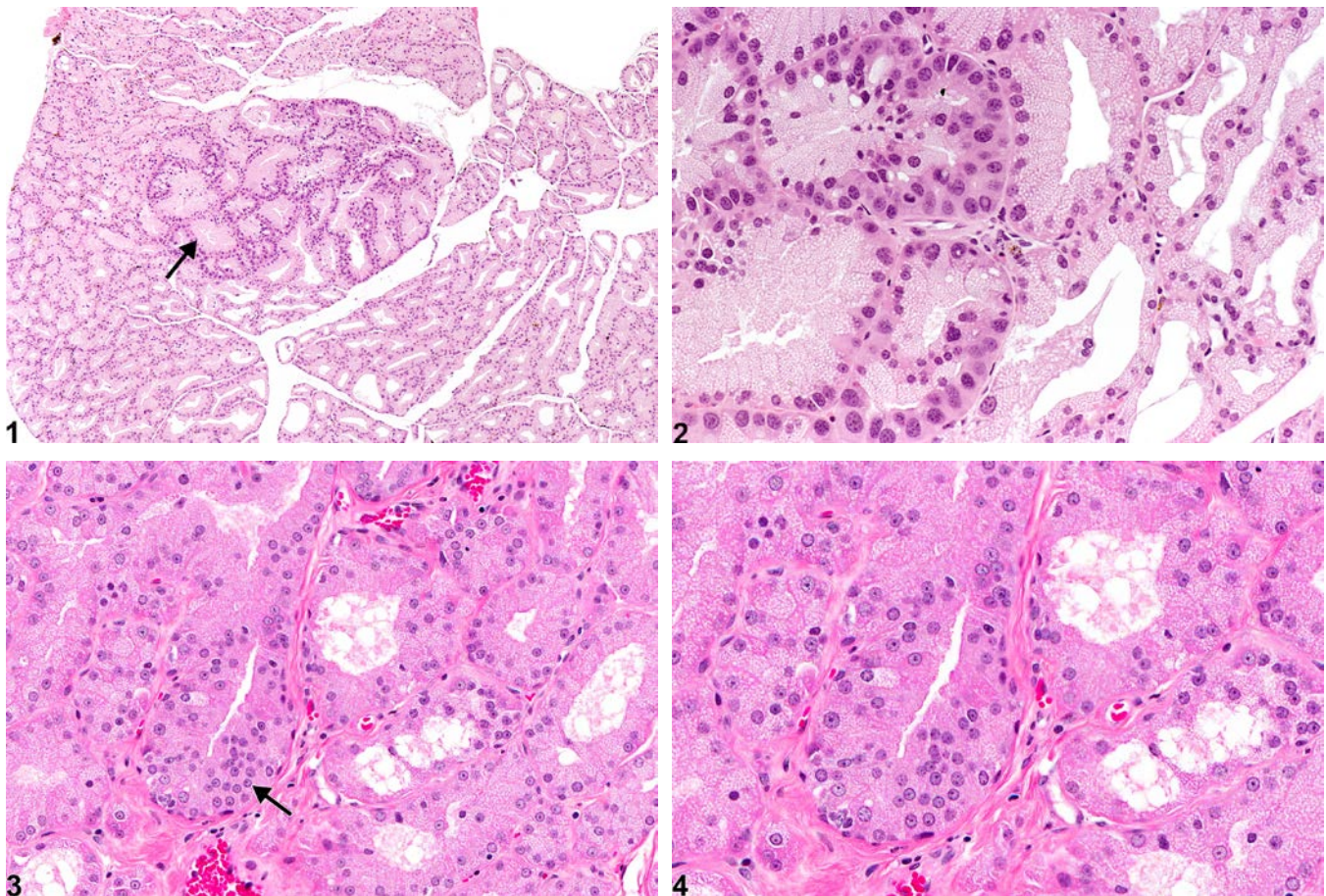


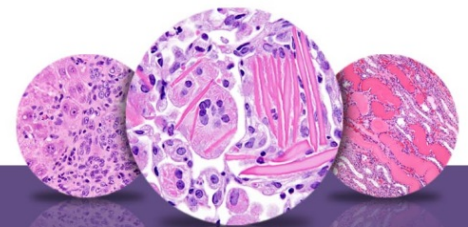


# NTP Nonneoplastic Lesion Atlas

## Harderian Gland – Hyperplasia



**Figure Legend:** **Figure 1** Harderian gland - Hyperplasia in a male B6C3F1 mouse from a chronic study. There is a well-demarcated focus of alveoli that doesn't compress the adjacent tissue. **Figure 2** Harderian gland - Hyperplasia in a male B6C3F1 mouse from a chronic study (higher magnification of Figure 1) The alveoli in the hyperplastic focus are lined by increased numbers of large cells with enlarged nuclei and a slightly different tinctorial quality than surrounding normal cells. **Figure 3** Harderian gland - Hyperplasia in a male F344\N rat from a chronic study. This hyperplastic focus (arrow) consists of a small cluster of alveoli lined by increased numbers of well-differentiated cells crowded into multiple layers. **Figure 4** Harderian gland - Hyperplasia in a male F344\N rat from a chronic study (higher magnification of Figure 3). The cells in this hyperplastic focus have a slightly different tinctorial quality than surrounding normal cells.



# NTP Nonneoplastic Lesion Atlas

## *Harderian Gland – Hyperplasia*

**Comment:** Harderian gland hyperplasia (Figure 1, Figure 2, Figure 3, and Figure 4) is characterized as a well-demarcated but noncompressive focal area in which alveoli are lined by increased numbers of large cells with slightly different tinctorial quality than surrounding normal cells. Nuclei are often similar to those of normal cells, but in some cases, the nuclei may be enlarged (Figure 1 and Figure 2). The increased cell numbers can result in crowding and multiple cell layers (Figure 3 and Figure 4), and even formation of small papillary projections. The absence of compression or marked nuclear pleomorphism can help distinguish Harderian gland hyperplasia from adenoma. Harderian gland hyperplasia may occur as a reactive sequela to degeneration and inflammation but can also be a primary toxic effect and precursor to Harderian gland neoplasia.

**Recommendation:** Harderian gland hyperplasia should be diagnosed and assigned a severity grade. Whether the hyperplasia is considered a primary effect or a secondary reactive change should be noted in the narrative, especially if there are treatment-related differences in incidence and/or severity.

### References:

Botts S, Jokinen M, Gaillard ET, Elwell MR, Mann PC. 1999. Salivary, Harderian, and lacrimal glands. In: Pathology of the Mouse: Reference and Atlas (Maronpot RR, Boorman GA, Gaul BW, eds). Cache River Press, Vienna, IL, 49-79.

Abstract: <http://www.cacheriverpress.com/books/pathmouse.htm>

Ghanayem BI, Nyska A, Haseman JK, Bucher JR. 2002. Acrylonitrile is a multisite carcinogen in male and female B6C3F1 mice. Toxicol Sci 68:59-68.

Full-text: <http://toxsci.oxfordjournals.org/content/68/1/59.full>

Ghanayem BI. 2007. Inhibition of urethane-induced carcinogenicity in Cyp2e1<sup>-/-</sup> in comparison to Cyp2e1<sup>+/+</sup> mice. Toxicol Sci 95:331-339.

Full-text: <http://toxsci.oxfordjournals.org/content/95/2/331.full>

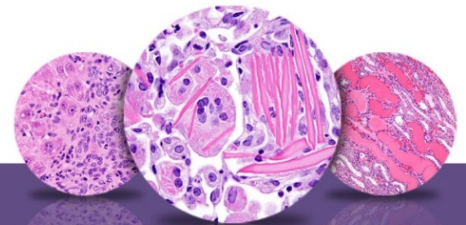
Greaves P. 2007. Nervous system and special sense organs. In: Histopathology of Preclinical Toxicity Studies: Interpretation and Relevance in Drug Safety Evaluation, 3rd ed. Academic Press, San Diego, CA, 861-933.

Abstract: <http://www.sciencedirect.com/science/book/9780444527714>

Huff JE, Eastin W, Roycroft J, Eustis SL, Haseman JK. 1988. Carcinogenesis studies of benzene, methyl benzene, and dimethylbenzenes. Ann NY Acad Sci 534:427-440.

Abstract: <http://onlinelibrary.wiley.com/doi/10.1111/j.1749-6632.1988.tb30132.x/abstract>





# NTP Nonneoplastic Lesion Atlas

## *Harderian Gland – Hyperplasia*

### References:

National Toxicology Program. 1997. NTP TR-461. Toxicology and Carcinogenesis Studies of Nitromethane (CAS No. 75-52-5) in F344/N Rats and B6C3F<sub>1</sub> Mice (Inhalation Studies). NTP, Research Triangle Park, NC.

Abstract: <http://ntp.niehs.nih.gov/go/6066>

National Toxicology Program. 2011. NTP TR-567. Toxicology and Carcinogenesis Studies of Ginseng (CAS No. 50647-08-0) in F344/N Rats and B6C3F<sub>1</sub> Mice (Gavage Studies). NTP, Research Triangle Park, NC.

Abstract: <http://ntp.niehs.nih.gov/go/34815>

White V, Sinn E, Albert DM. 1990. Harderian gland pathology in transgenic mice carrying the MMTV/v-Ha-ras gene. Invest Ophthalmol Vis Sci 31:577-581.

Abstract: <http://www.iovs.org/content/31/3/577.short>

Yoshitomi K, Boorman GA. 1990. Eye and associated glands. In: Pathology of the Fischer Rat: Reference and Atlas (Boorman GA, Eustis SL, Elwell MR, Montgomery CA, MacKenzie WF, eds). Academic Press, San Diego, CA, 239-260.

Abstract: <http://www.ncbi.nlm.nih.gov/nlmcatalog/9002563>

### Author:

Margarita M. Gruebbel, DVM, PhD, DACVP  
Senior Pathologist  
Experimental Pathology Laboratories, Inc.  
Research Triangle Park, NC