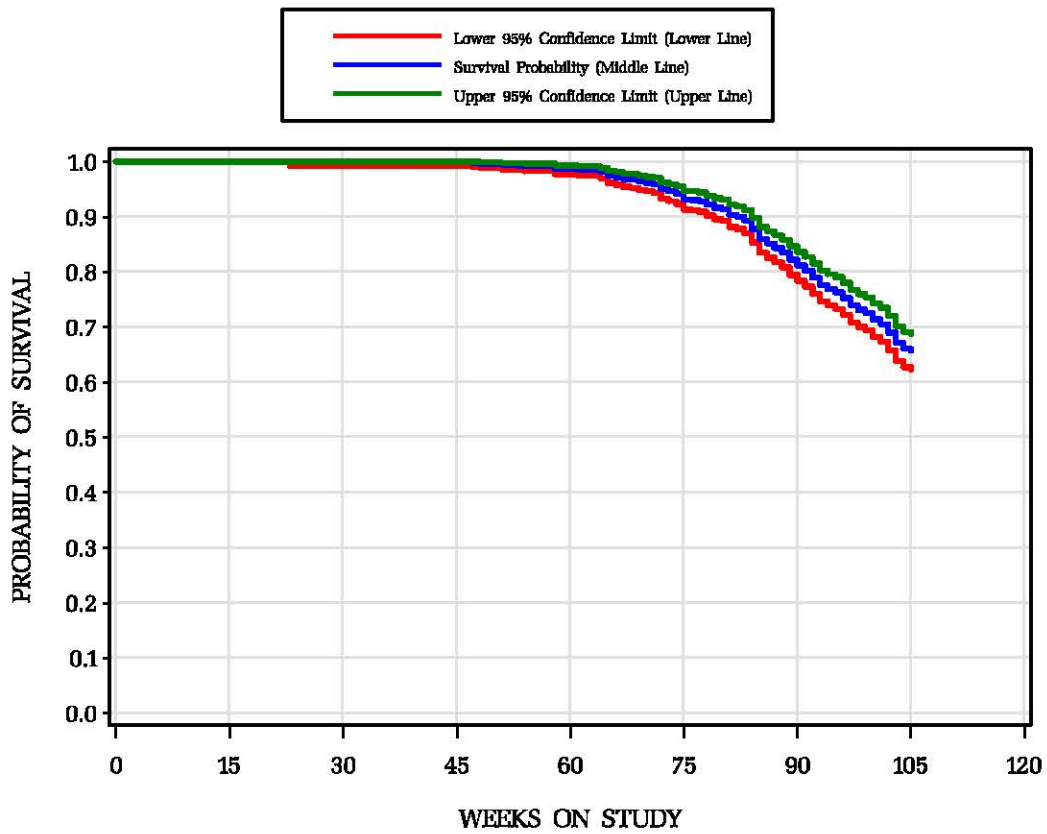
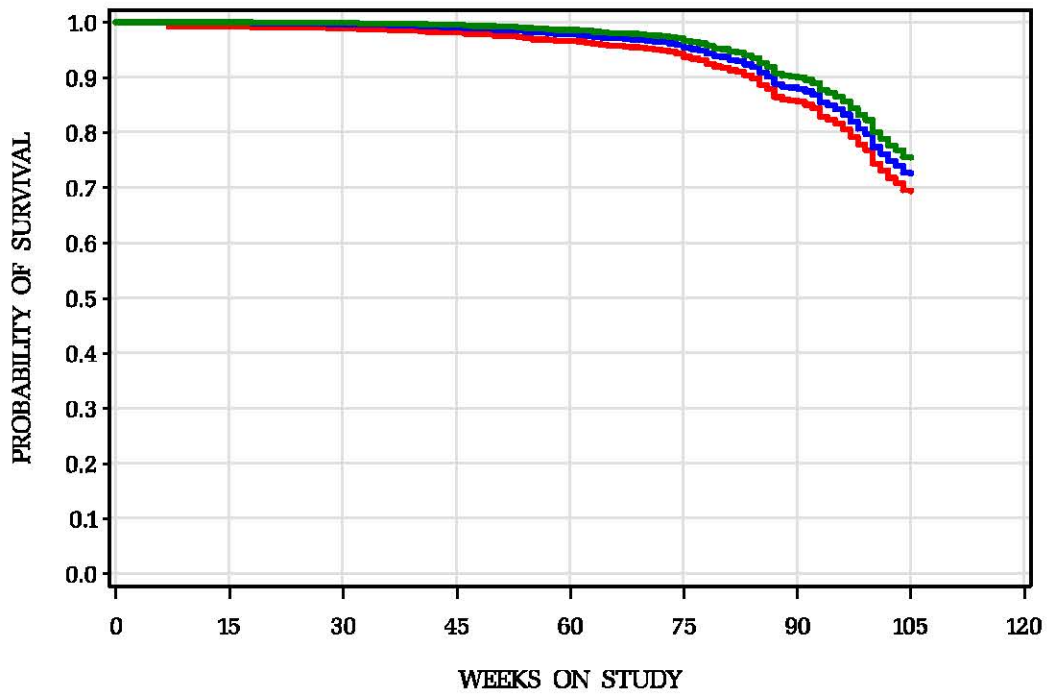


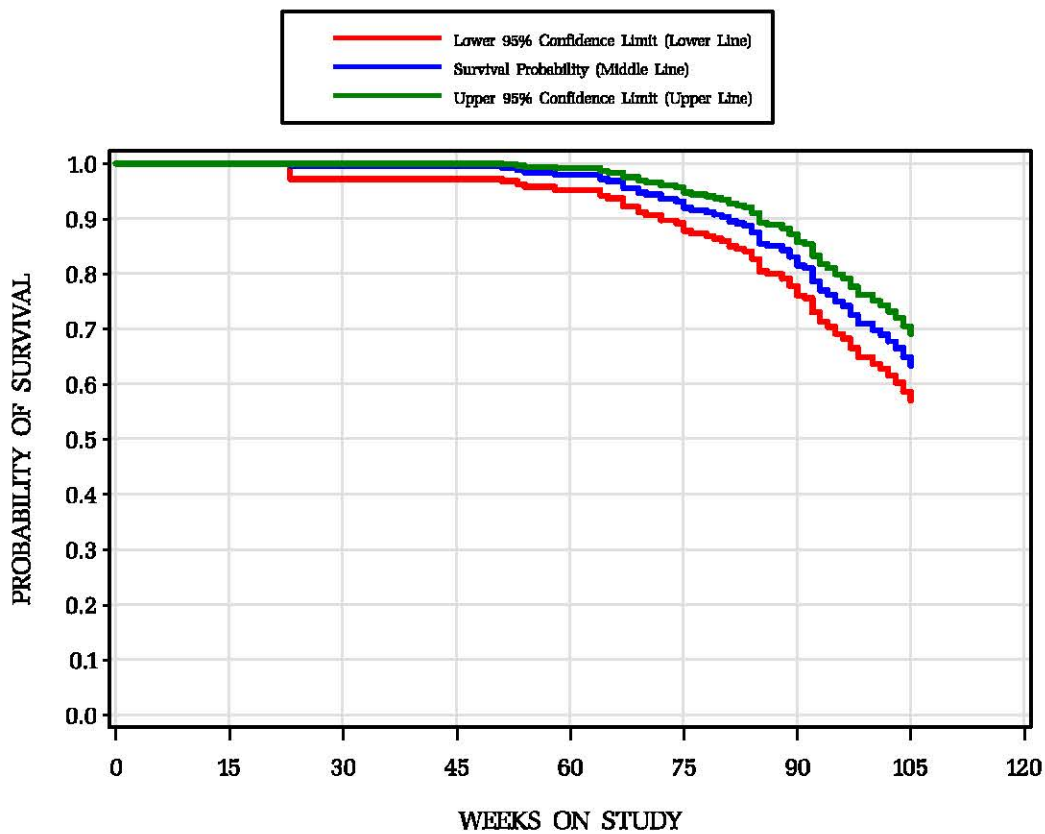
### Historical Control Survival for All Routes/Vehicles Male Mice/B6C3F1 19 studies



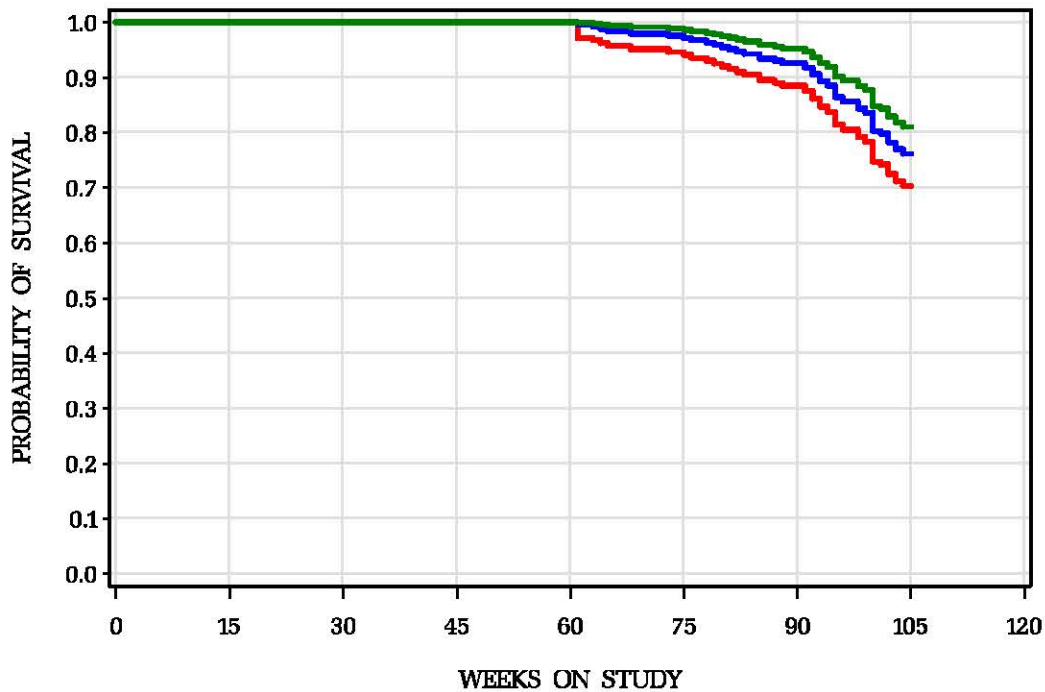
### Female Mice/B6C3F1 19 studies



### Historical Control Survival for Gavage/Corn Oil Studies Male Mice/B6C3F1 5 studies

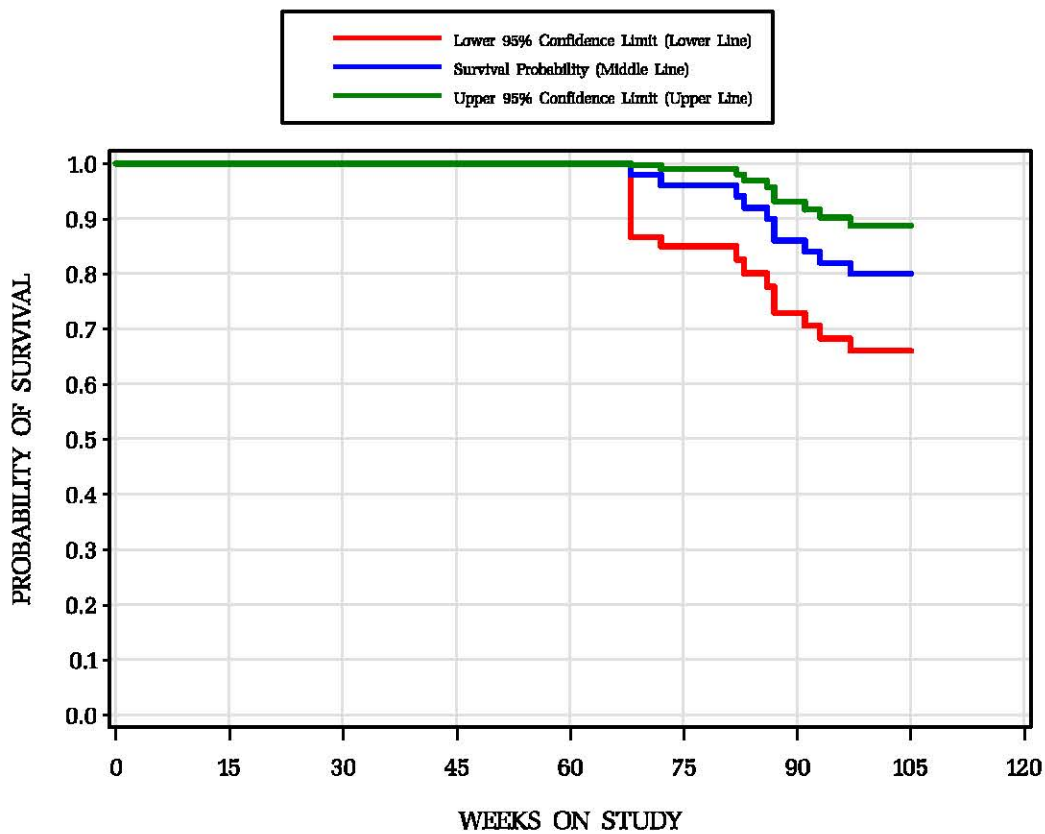


### Female Mice/B6C3F1 5 studies

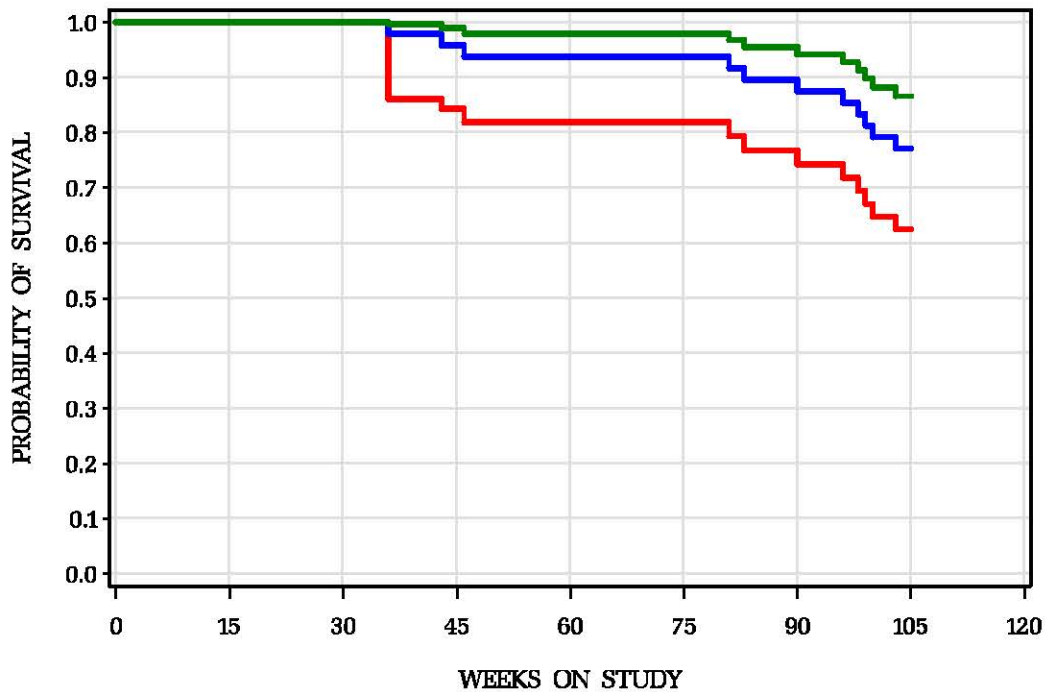


# Historical Control Survival for Gavage/Methylcellulose Studies

## Male Mice/B6C3F1 1 study

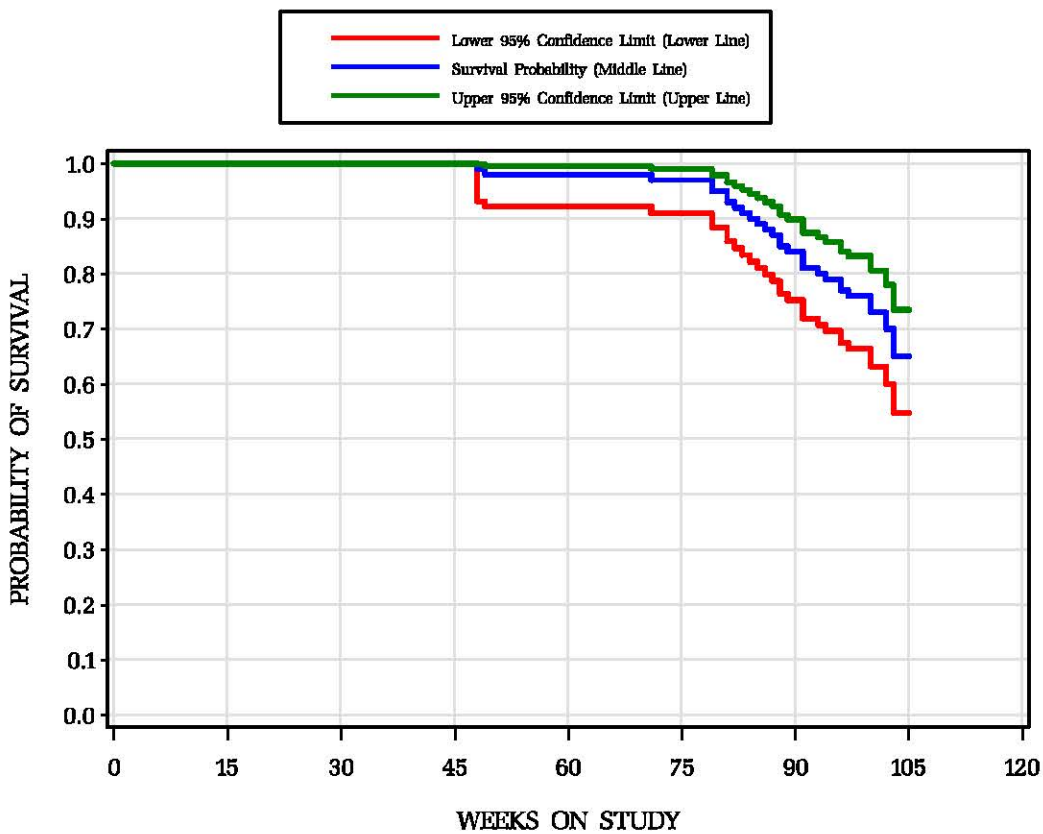


## Female Mice/B6C3F1 1 study

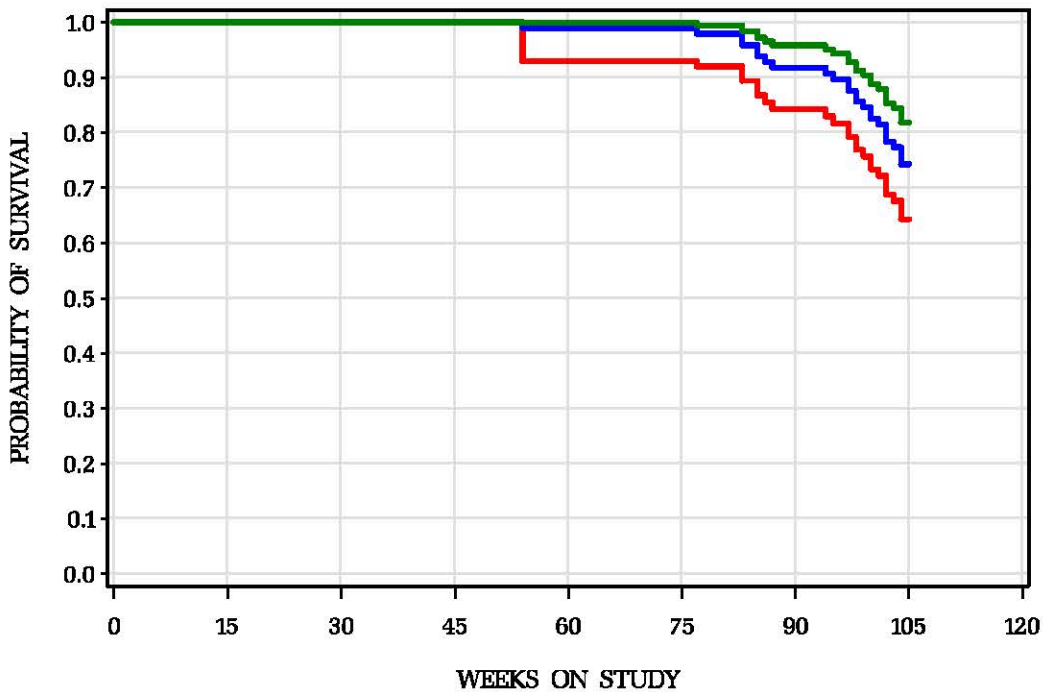


# Historical Control Survival for Gavage/Water Studies

## Male Mice/B6C3F1 2 studies

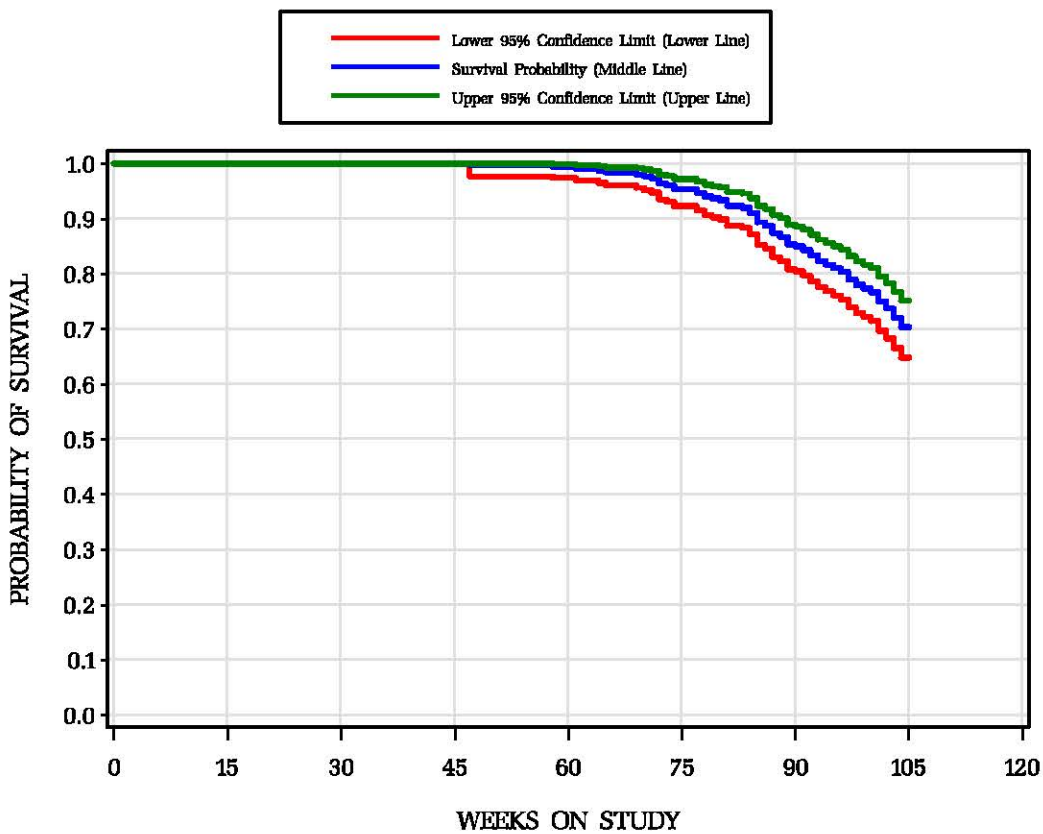


## Female Mice/B6C3F1 2 studies

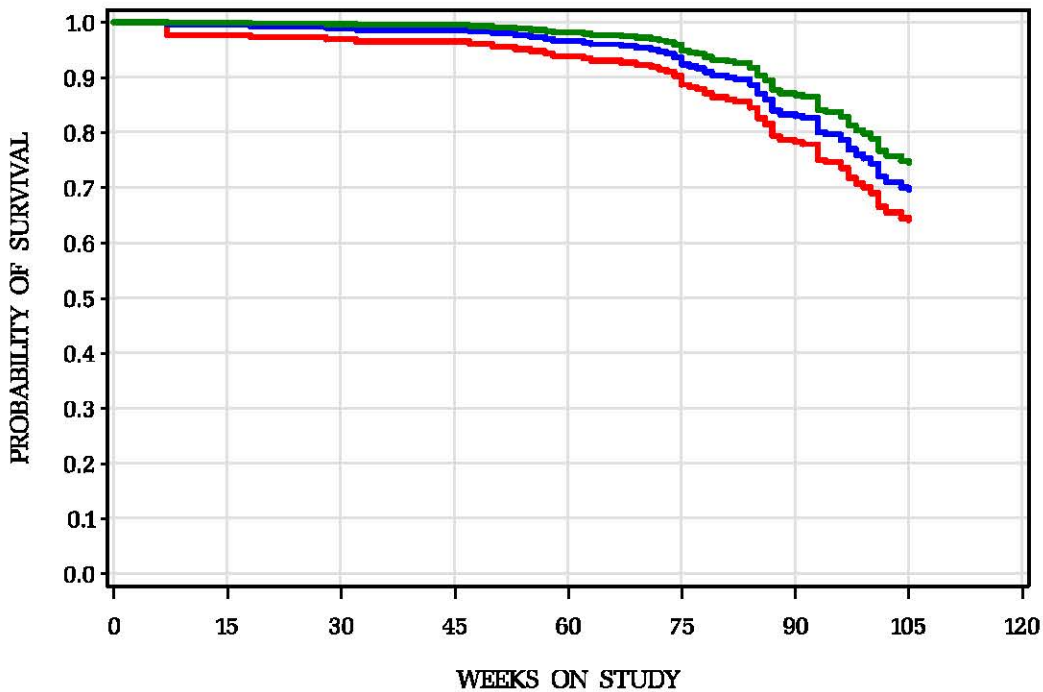


# Historical Control Survival for Inhalation/Air Studies

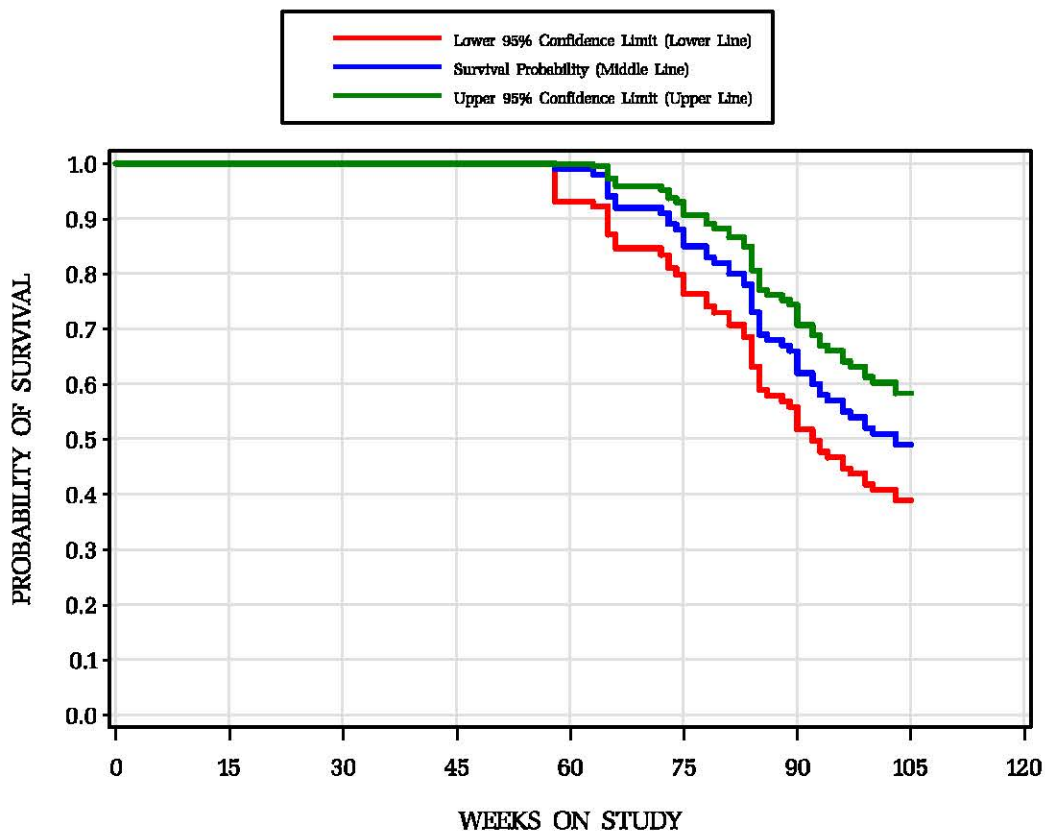
## Male Mice/B6C3F1 6 studies



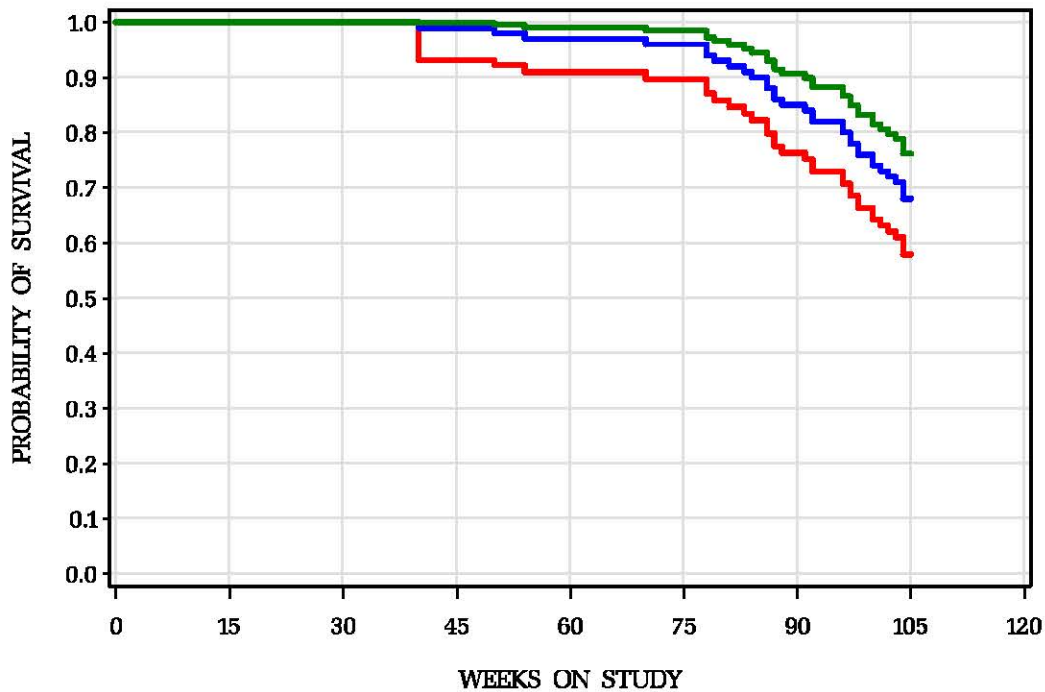
## Female Mice/B6C3F1 6 studies



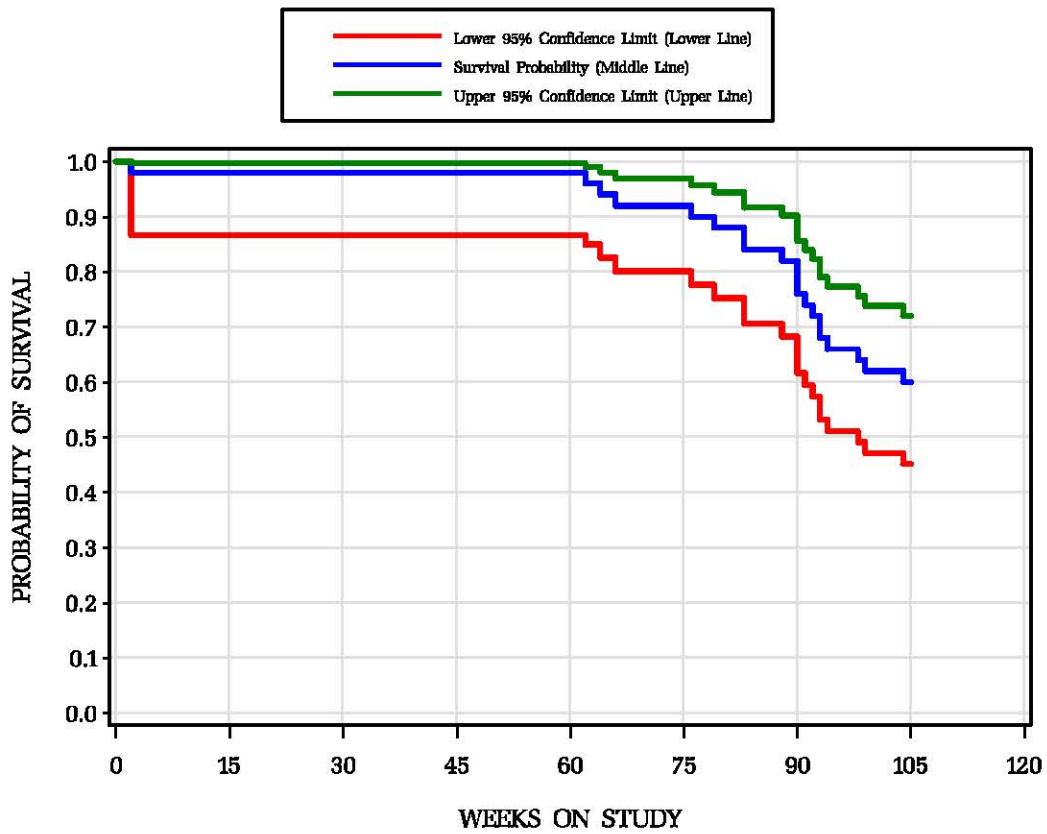
### Historical Control Survival for Oral/Water Studies Male Mice/B6C3F1 2 studies



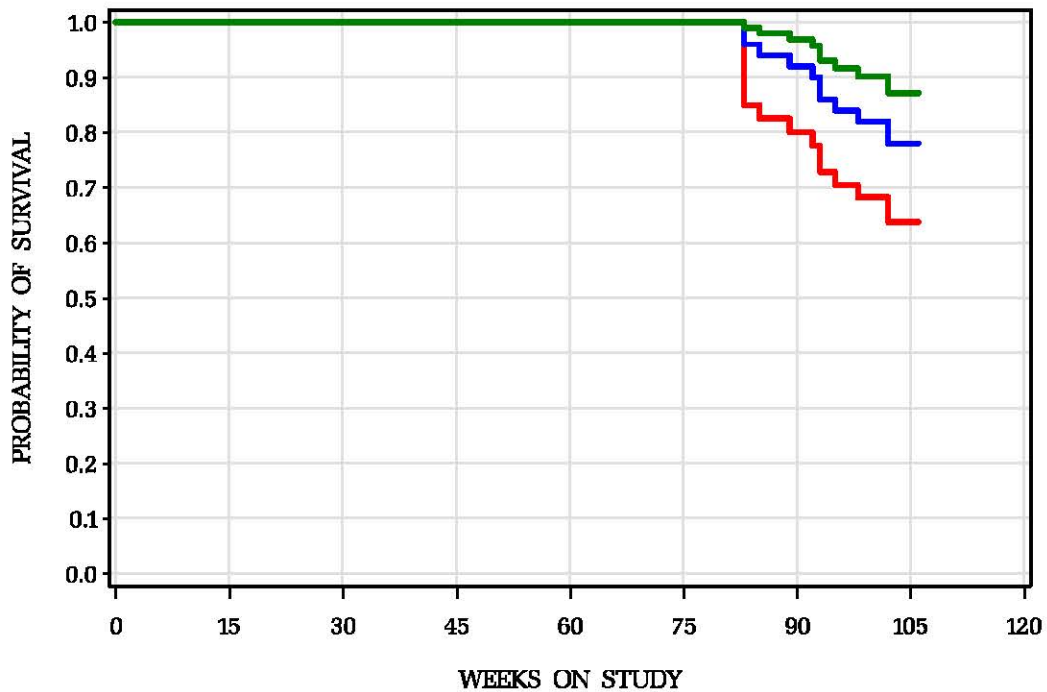
### Female Mice/B6C3F1 2 studies



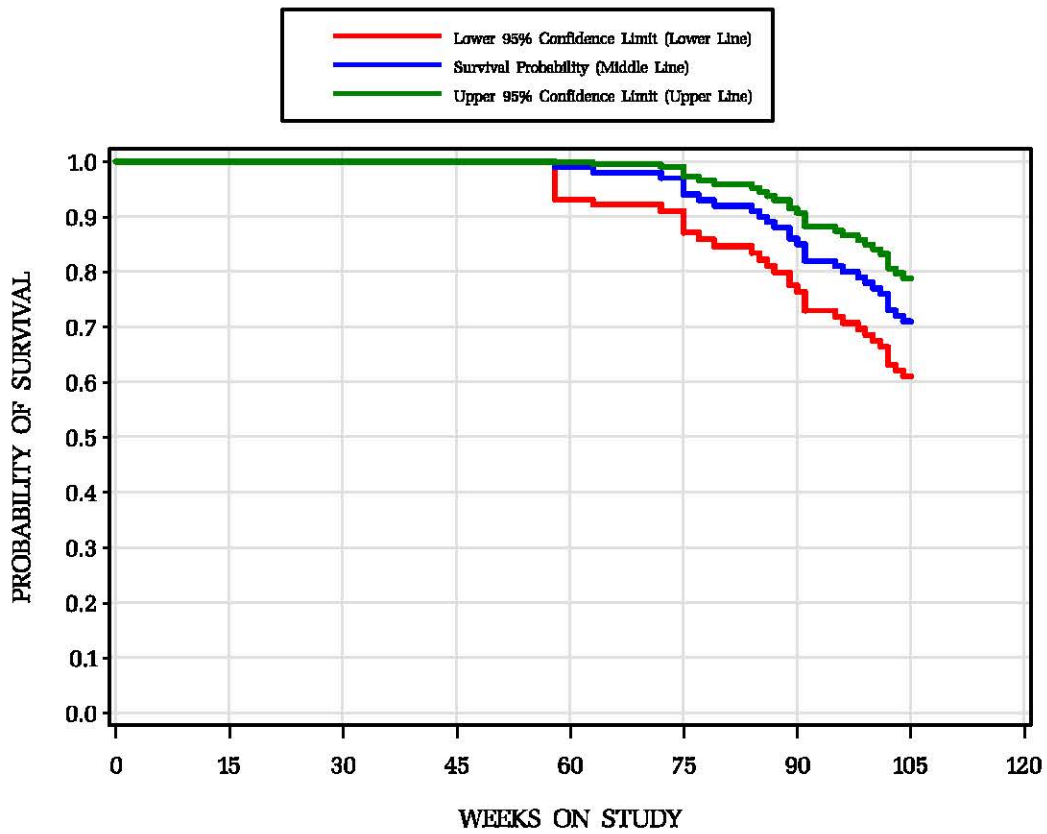
# Historical Control Survival for Skin Application/Acetone Studies Male Mice/B6C3F1 1 study



# Female Mice/B6C3F1 1 study



# Historical Control Survival for Skin Application/Ethanol Studies Male Mice/B6C3F1 2 studies



# Female Mice/B6C3F1 2 studies

