

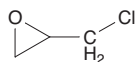
Epichlorohydrin

CAS No. 106-89-8

Reasonably anticipated to be a human carcinogen

First listed in the *Fourth Annual Report on Carcinogens* (1985)

Also known as 1-chloro-2,3-epoxypropane or CEP



Carcinogenicity

Epichlorohydrin is *reasonably anticipated to be a human carcinogen* based on sufficient evidence of carcinogenicity from studies in experimental animals.

Cancer Studies in Experimental Animals

Epichlorohydrin caused tumors in two rodent species, at several different tissue sites, and by several different routes of exposure. In male rats, administration of epichlorohydrin by stomach tube caused benign and malignant tumors of the forestomach (carcinoma and papilloma), and inhalation exposure to epichlorohydrin caused benign and malignant tumors of the nasal cavity (carcinoma and papilloma). In female mice, epichlorohydrin administered by subcutaneous injection caused cancer at the injection site (sarcoma). Epichlorohydrin applied to the skin acted as an initiator in a tumor initiation-promotion study in female mice, but did not cause tumors when applied alone (IARC 1976).

Since epichlorohydrin was listed in the *Fourth Annual Report on Carcinogens*, additional studies in rodents have been identified. Administration of epichlorohydrin by stomach tube caused cancer of the forestomach (carcinoma) in rats of both sexes (Wester *et al.* 1985, IARC 1999). In male strain A/J mice (a strain with a high spontaneous incidence of lung cancer), epichlorohydrin administered by intraperitoneal injection increased the number of lung tumors per animal (Stoner *et al.* 1986, IARC 1999).

Cancer Studies in Humans

The data available from epidemiological studies are inadequate to evaluate the relationship between human cancer and exposure specifically to epichlorohydrin. One cohort study of workers exposed to epichlorohydrin at two factories found a significant excess of respiratory cancer; however, some of the workers had been engaged in the manufacture of isopropyl alcohol and may have been exposed to diisopropyl sulfate (Enterline 1982, IARC 1982).

Since epichlorohydrin was listed in the *Fourth Annual Report on Carcinogens*, the International Agency for Research on Cancer has reviewed its carcinogenicity twice (IARC 1987, 1999). The 1999 review included a follow-up study of the cohort exposed to epichlorohydrin and isopropyl alcohol (Enterline 1982), as well as additional cohort and nested case-control studies. No excess of lung cancer was observed in the follow-up study (Tsai *et al.* 1996), in a small cohort of workers exposed to epichlorohydrin and allyl chloride (Olsen *et al.* 1994), or in a nested case-control study of male chemical workers (Bond *et al.* 1986). A cohort study of resin and dye makers found a significant excess of lung cancer, but a nested case-control study of lung cancer in this cohort found no association with exposure duration or cumulative exposure level (Delzell *et al.* 1989). A nested case-control study of nervous-system cancer in the same cohort found a statistically nonsignificant excess of central nervous system cancer; risk increased with both exposure duration ($P_{\text{trend}} = 0.11$) and cumulative exposure level ($P_{\text{trend}} = 0.08$). These studies were limited by small

sample sizes, co-exposure of workers to other substances, and lack of control for potentially confounding variables. IARC (1999) concluded that there was inadequate evidence in humans for the carcinogenicity of epichlorohydrin.

Properties

Epichlorohydrin is an epoxide with bifunctional alkylating activity which at room temperature exists as a colorless liquid with a sweet, pungent, chloroform-like odor. It is soluble in water and benzene, miscible with ethanol, diethyl ether, chloroform, trichloroethylene, and carbon tetrachloride, and immiscible with petroleum hydrocarbons (IARC 1999). Epichlorohydrin is stable at normal temperature and pressure, but is highly flammable with moderate heating (Akron 2009). It can react violently with chemicals carrying an active hydrogen atom, including water (IARC 1999, HSDB 2009). It is heavier than air and may travel from its source and collect in low-lying areas (HSDB 2009). Physical and chemical properties of epichlorohydrin are listed in the following table.

Property	Information
Molecular weight	92.5 ^a
Specific gravity	1.18 at 25°C/4°C ^a
Melting point	-26°C ^a
Boiling point	118°C ^a
Log K_{ow}	0.45 ^a
Water solubility	66 g/L at 25°C ^b
Vapor pressure	16.4 mm Hg at 25°C ^a
Vapor density relative to air	3.3 ^a

Sources: ^aHSDB 2009, ^bChemIDplus 2009.

Use

Epichlorohydrin is used in the production of numerous synthetic materials, including epoxy, phenoxy, and polyamide resins, polyether rubber used in car parts, synthetic glycerin, glycidyl ethers, polythiols, elastomers, cross-linked food starch, surfactants, plasticizers, dyestuffs, pharmaceutical products, oil emulsifiers, lubricants, and adhesives (IARC 1976, WHO 1984). Epichlorohydrin may be used as a homopolymer or copolymer in the synthesis of epichlorohydrin rubber (Machine Design 2007). It is also used as a solvent for resins, gums, cellulose, esters, paints, and lacquers; to cure propylene-based rubbers; and in resins with high wet strength for the paper industry (IARC 1976, 1999). Epichlorohydrin is widely used as a stabilizer in chlorine-containing substances such as rubber, pesticide formulations, and solvents (HSDB 2009).

Production

Epichlorohydrin was first synthesized in 1854. Small-scale production in the United States began in 1937, and large-scale production in 1949. From 1973 to 1978, U.S. production ranged from 346 million pounds to 551 million pounds (IARC 1976, 1999). Combined U.S. production and imports of epichlorohydrin reported to the U.S. Environmental Protection Agency (EPA) exceeded 500 million pounds from 1986 to 2002 (exceeding 1 billion pounds in 1998) (EPA 2004), but were below 500 million pounds in 2015 (as shown in the table on the next page). For the period from 1989 to 2008, imports reported to the U.S. International Trade Commission peaked at 42.1 million pounds in 2000 (USITC 2009), but had more than doubled by 2017. U.S. exports peaked at 300 million pounds in 2006, falling to about 180 million pounds in 2008 (USITC 2009) and about 65 million pounds in 2017. In 2009, epichlorohydrin was available from 50 suppliers worldwide, including 27 U.S. suppliers (ChemSources 2009).

Category	Year	Quantity (lb)
Production + imports ^a	2015	250 million to 500 million
U.S. imports ^b	2017	98.6 million
U.S. exports ^b	2017	64.6 million

Sources: ^aEPA 2016. ^bUSITC 2018.

Exposure

The routes of potential human exposure to epichlorohydrin are ingestion, inhalation, and dermal contact (HSDB 2009). Evidence suggests that epichlorohydrin is readily absorbed when ingested or inhaled and that it is a systemic poison when absorbed through the skin (WHO 1984). Exposure will occur primarily in occupational settings, but individuals in the general population may be exposed while using epoxy resins (Howard 1989) or through ingestion of food (WHO 1984, FDA 2010a,b,c,d,e). Food may contain epichlorohydrin as a result of its use as a cross-linker in modified food starch and in food processing or in food packaging materials, such as adhesives and coatings. Concentrations of epichlorohydrin in modified food starch are required to be below 0.3%, which limits the potential daily intake through ingestion.

According to EPA's Toxics Release Inventory, 45 facilities released a total of 155,878 lb of epichlorohydrin to the environment in 2007, of which 84% was released to air, 6% to surface water, and most of the remaining 10% to on- and off-site landfills (TRI 2009). Reported epichlorohydrin releases have declined continuously from a high of almost 909,000 lb in 1989, of which 77% was released to air, 1% to surface water, 22% to underground injection wells, and virtually none to landfills. Over time, the amount of epichlorohydrin released to land has increased, while total releases and releases to air have declined, and releases to surface water and underground injection wells have fluctuated. Epichlorohydrin has been detected, but not quantified, in surface water and river sediment (HSDB 2009). Epichlorohydrin was also released to the environment as a result of two railroad accidents in West Virginia; in 1963, 5,000 gal was released into the New River at South Fayette, and in 1978, 20,000 gal was released near the center of the town of Point Pleasant. In the latter instance, contamination of groundwater was confirmed; epichlorohydrin was found at a concentration of 75 ppm in the well closest to the spill site.

When released to air, epichlorohydrin will be degraded by photochemically produced hydroxyl radicals, with an estimated half-life of 4 days. If released to surface water, epichlorohydrin is expected not to adsorb to sediment, but to volatilize, with an estimated half-life of 19 hours in a model river and 12 days in a model lake (HSDB 2009). Hydrolysis is expected to occur with a half-life of 8.2 days in distilled water and 5.3 days in seawater. Hydrolysis will produce 3-chloro-1,2-propanediol in fresh water and 1,3-dichloro-2-propanol in seawater (Howard 1989). If epichlorohydrin is spilled on land, it most likely will volatilize or leach into the subsurface; biodegradation and hydrolysis also may occur in soil. Bioaccumulation in aquatic organisms is unlikely (HSDB 2009).

Occupational exposure may occur during the production of epichlorohydrin and during its use to synthesize end products. The National Occupational Hazard Survey (conducted from 1972 to 1974) estimated that 85,000 workers in 10 industry segments potentially were exposed to epichlorohydrin (NIOSH 1976), and the National Occupational Exposure Survey (conducted from 1981 to 1983) estimated that 80,170 workers in 24 industry segments, including 14,921 women, potentially were exposed (NIOSH 1990).

Studies of occupational exposure to epichlorohydrin have been conducted for the chemical and paper-manufacturing industries and at resin and synthetic leather manufacturing plants (Kuo *et al.* 2000, Luo *et al.* 2003, 2004, Korhonen *et al.* 2004). Comprehensive indus-

trial surveys conducted for the National Institute for Occupational Safety and Health between 1973 and 1976 at seven facilities manufacturing epichlorohydrin, epoxy resins, and glycerol suggested that chemical operators at these plants had the greatest potential for exposure to epichlorohydrin. Time-weighted-average (TWA) exposure concentrations ranged from less than 0.04 to 7.9 mg/m³. In two other epoxy resin manufacturing facilities, the TWA concentration of epichlorohydrin was generally below 3.8 mg/m³. Concentrations in the laboratory areas of these plants were higher, ranging from 3.8 to 18.9 mg/m³ (WHO 1984). In a solvent epichlorohydrin production plant, concentrations were as high as 5.5 ppm (20.8 mg/m³) during normal production and 54.9 ppm (207.5 mg/m³) when there were mechanical difficulties (Howard 1989). As of 2005, health hazard evaluations had been requested by workers in 10 facilities based at least in part on epichlorohydrin exposure; however, the NIOSH investigations resulted in a recommendation for workplace practice changes at only one facility (a wet corn milling facility), based on an epichlorohydrin concentration of 0.1 mg/m³ (Ferguson 1977, Lewis 1979, Markel 1979, Chrostek and Levine 1980, McGlothlin *et al.* 1980, Stephenson *et al.* 1981, Lee *et al.* 1982, Liss and Ruhe 1982, Lee 1985, Hills 1988).

Regulations

Coast Guard (Dept. of Homeland Security)

Minimum requirements have been established for safe transport of epichlorohydrin on ships and barges.

Department of Transportation (DOT)

Epichlorohydrin is considered a hazardous material and a marine pollutant, and special requirements have been set for marking, labeling, and transporting this material.

Environmental Protection Agency (EPA)

Clean Air Act

National Emission Standards for Hazardous Air Pollutants: Listed as a hazardous air pollutant.

New Source Performance Standards: Manufacture or use of epichlorohydrin is subject to certain provisions for the control of volatile organic compound emissions.

Prevention of Accidental Release: Threshold quantity = 20,000 lb.

Clean Water Act

Designated a hazardous substance.

Comprehensive Environmental Response, Compensation, and Liability Act

Reportable quantity (RQ) = 100 lb.

Emergency Planning and Community Right-To-Know Act

Toxics Release Inventory: Listed substance subject to reporting requirements.

Reportable quantity (RQ) = 100 lb.

Threshold planning quantity (TPQ) = 1,000 lb.

Resource Conservation and Recovery Act

Listed Hazardous Waste: Waste codes for which the listing is based wholly or partly on the presence of epichlorohydrin = U041, K017.

Listed as a hazardous constituent of waste.

Safe Drinking Water Act

Each public water system must certify annually that when epichlorohydrin is used in drinking water systems, the level does not exceed 0.01% dosed at 20 ppm (or equivalent).

Food and Drug Administration (FDA, an HHS agency)

Food starch may be etherified or esterified by treatment with epichlorohydrin, with maximum epichlorohydrin levels ranging from 0.1% to 0.3% (depending on process).

Various epichlorohydrin copolymers may be used as food additives and food contact materials as prescribed in 21 CFR 172, 173, 175-178.

Occupational Safety and Health Administration (OSHA, Dept. of Labor)

While this section accurately identifies OSHA's legally enforceable PELs for this substance in 2018, specific PELs may not reflect the more current studies and may not adequately protect workers.

Permissible exposure limit (PEL) = 5 ppm (19 mg/m³).

Potential for dermal absorption.

Guidelines

American Conference of Governmental Industrial Hygienists (ACGIH)

Threshold limit value – time-weighted average (TLV-TWA) = 0.5 ppm.

Potential for dermal absorption.

National Institute for Occupational Safety and Health (NIOSH, CDC, HHS)

Immediately dangerous to life and health (IDLH) limit = 75 ppm.

Listed as a potential occupational carcinogen.

References

- Akron. 2009. *The Chemical Database*. The Department of Chemistry at the University of Akron. <http://ull.chemistry.uakron.edu/erd> and search on CAS number. Last accessed: 5/09.
- ChemIDplus. 2009. *ChemIDplus Advanced*. National Library of Medicine. <http://chem.sis.nlm.nih.gov/chemidplus/chemidheavy.jsp> and select Registry Number and search on CAS number. Last accessed: 5/09.
- ChemSources. 2009. *Chem Sources - Chemical Search*. Chemical Sources International. <http://www.chemsources.com/chemonline.html> and search on epichlorohydrin. Last accessed: 5/19/09.
- Chrostek WJ, Levine MS. 1980. *HHE Report No. HHE-80-153-881, Palmer Industrial Coatings Incorp. Williamsport, Pennsylvania*. Health Hazard Evaluation Report [Abstract]. National Institute for Occupational Safety and Health. <http://www2a.cdc.gov/hhe/select.asp?PjtName=4540&bFlag=0&ID=15>.
- Delzell E, Macaluso M, Cole P. 1989. A follow-up study of workers at a dye and resin manufacturing plant. *J Occup Med* 31(3): 273-278.
- EPA. 2004. *Non-confidential IUR Production Volume Information*. U.S. Environmental Protection Agency. <http://www.epa.gov/oppt/iur/tools/data/2002-vol.html> and search on CAS number.
- EPA. 2016. *Chemical Data Reporting Summary: 2-(Chloromethyl)-oxirane*. U.S. Environmental Protection Agency. <https://chemview.epa.gov/chemview> and search on CAS number or substance name and select Manufacturing, Processing, Use, and Release Data Maintained by EPA and select Chemical Data Reporting Details.
- FDA. 2010a. *Indirect Food Additives: Adhesives and Components of Coatings*. 21 CFR 175. Electronic Code of Federal Regulations. <http://ecfr.gpoaccess.gov/cgi/t/text/text-idx?c=ecfr;rgn=div5;view=text;node=21%3A3.0.1.1.6;idno=21;sid=2d0890ec6eda0322d760c8fb60be36e6;cc=ecfr>.
- FDA. 2010b. *Indirect Food Additives: Adjuvants, Production Aids, and Sanitizers*. 21 CFR 178. Electronic Code of Federal Regulations. <http://ecfr.gpoaccess.gov/cgi/t/text/text-idx?c=ecfr;rgn=div5;view=text;node=21%3A3.0.1.1.9;idno=21;sid=2d0890ec6eda0322d760c8fb60be36e6;cc=ecfr>.
- FDA. 2010c. *Indirect Food Additives: Paper and Paperboard Components*. 21 CFR 176. Electronic Code of Federal Regulations. <http://ecfr.gpoaccess.gov/cgi/t/text/text-idx?c=ecfr;rgn=div5;view=text;node=21%3A3.0.1.1.7;idno=21;sid=2d0890ec6eda0322d760c8fb60be36e6;cc=ecfr>.
- FDA. 2010d. *Indirect Food Additives: Polymers*. 21 CFR 177. Electronic Code of Federal Regulations. <http://ecfr.gpoaccess.gov/cgi/t/text/text-idx?c=ecfr;rgn=div5;view=text;node=21%3A3.0.1.1.8;idno=21;sid=2d0890ec6eda0322d760c8fb60be36e6;cc=ecfr>.
- FDA. 2010e. *Secondary Direct Food Additives Permitted in Food for Human Consumption*. 21 CFR 173. Electronic Code of Federal Regulations. <http://ecfr.gpoaccess.gov/cgi/t/text/text-idx?c=ecfr&rgn=div5&view=text&node=21:3.0.1.1.4&idno=21>.
- Ferguson RP. 1977. *Hazard Evaluation and Technical Assistance Report No. TA-77-44, Robert A. Taft Center, Cincinnati, Ohio*. Health Hazard Evaluation Report [Abstract]. National Institute for Occupational Safety and Health. <http://www2a.cdc.gov/hhe/select.asp?PjtName=5526&bFlag=1&ID=1>.
- Hills B. 1988. *HHE Report No. HETA-88-340-2048, National Starch and Chemical Company, Island Falls, Maine*. Health Hazard Evaluation Report. National Institute for Occupational Safety and Health. <http://www.cdc.gov/niosh/hhe/reports/pdfs/1988-0340-2048.pdf>.
- Howard PH. 1989. *Epichlorohydrin*. In *Handbook of Environmental Fate and Exposure Data for Organic Chemicals*, vol. 1. Chelsea, MI: Lewis Publishers. pp. 319-324.
- HSDB. 2009. *Hazardous Substances Data Bank*. National Library of Medicine. <http://toxnet.nlm.nih.gov/cgi-bin/sis/htmlgen?HSDB> and search on CAS number. Last accessed: 5/19/09.
- IARC. 1976. Epichlorohydrin. In *Cadmium, Nickel Some Epoxides, Miscellaneous Industrial Chemicals and General Considerations on Volatile Anaesthetics*. IARC Monographs on the Evaluation of Carcinogenic Risk of Chemicals to Humans, vol. 11. Lyon, France: International Agency for Research on Cancer. pp. 131-139.
- IARC. 1987. Epichlorohydrin. In *Overall Evaluations of Carcinogenicity*. IARC Monographs on the Evaluation of Carcinogenic Risk of Chemicals to Humans, suppl. 7. Lyon, France: International Agency for Research on Cancer. pp. 202-203.
- IARC. 1999. Epichlorohydrin. In *Re-evaluation of Some Organic Chemicals, Hydrazine, and Hydrogen Peroxide*. IARC Monographs on the Evaluation of Carcinogenic Risk of Chemicals to Humans, vol. 71. Lyon, France: International Agency for Research on Cancer. pp. 603-628.
- IPCS. 1984. *Environmental Health Criteria No. 33. Epichlorohydrin*. International Programme on Chemical Safety. <http://www.inchem.org/documents/ehc/ehc/ehc33.htm>.
- Korhonen K, Liukkonen T, Ahrens W, Astrakianakis G, Boffetta P, Burdorf A, et al. 2004. Occupational exposure to chemical agents in the paper industry. *Int Arch Occup Environ Health* 77(7): 451-460.
- Kuo HW, Huang YS, Lo JC, Cheng TJ, Wu MJ. 2000. Exposure to solvents in a synthetic leather manufacturing plant. *Int Arch Occup Environ Health* 73(4): 275-280.
- Lee SA. 1985. *HHE Report No. HETA-85-195-1768, Dale Electronics, Incorporated, Norfolk, Nebraska*. Health Hazard Evaluation Report. National Institute for Occupational Safety and Health. <http://www.cdc.gov/niosh/hhe/reports/pdfs/1984-0023-1462.pdf>.
- Lee SA, Albrecht W, Aw TC. 1982. *HHE Report No. HETA-82-028-1249, Morton Chemical Corporation, New Iberia, Louisiana*. Health Hazard Evaluation Report [Abstract]. National Institute for Occupational Safety and Health. <http://www2a.cdc.gov/hhe/select.asp?PjtName=5452&bFlag=0&ID=6>.
- Lewis FA. 1979. *HHE Determination, Report No. HHE-79-141-711, Fischer and Porter Company, Warminster, Pennsylvania*. Health Hazard Evaluation Report [Abstract]. National Institute for Occupational Safety and Health. <http://www2a.cdc.gov/hhe/select.asp?PjtName=3545&bFlag=0&ID=2>.
- Liss GM, Ruhe R. 1982. *HHE Report No. HETA-82-315-1320, Wilmington Chemical Corporation, Wilmington, Delaware*. Health Hazard Evaluation Report [Abstract]. National Institute for Occupational Safety and Health. <http://www2a.cdc.gov/hhe/select.asp?PjtName=5853&bFlag=0&ID=7>.
- Luo JC, Kuo HW, Cheng TJ, Chang MJ. 2003. Pulmonary function abnormality and respiratory tract irritation symptoms in epichlorohydrin-exposed workers in Taiwan. *Am J Ind Med* 43(4): 440-446.
- Luo JC, Cheng TJ, Kuo HW, Chang MJ. 2004. Decreased lung function associated with occupational exposure to epichlorohydrin and the modification effects of glutathione S transferase polymorphisms. *J Occup Environ Med* 46(3): 280-286.
- Machine Design. 2007. *Oil Resistant Rubbers*. <http://www.machinedesign.com/BDE/materials/bdemat4/rvmat3d.html>. Last accessed: 6/27/07.
- Markel HL. 1979. *HHE Report No. HHE-79-104-838, A. O. Smith-Inland, Inc., Little Rock, Arkansas*. Health Hazard Evaluation Report [Abstract]. National Institute for Occupational Safety and Health. <http://www2a.cdc.gov/hhe/select.asp?PjtName=5203&bFlag=0&ID=14>.
- McGlothlin JD, Schulte P, Wagenen H. 1980. *HHE Report, No. HETA-80-190-1135, American Cyanamid Company, Kalamazoo, Michigan*. Health Hazard Evaluation Report [Abstract]. National Institute for Occupational Safety and Health. <http://www2a.cdc.gov/hhe/select.asp?PjtName=5600&bFlag=2&ID=16>.
- NIOSH. 1976. *National Occupational Hazard Survey (1972-74)*. DHEW (NIOSH) Publication No. 78-114. Cincinnati, OH: National Institute for Occupational Safety and Health.
- NIOSH. 1978. *Current Intelligence Bulletin 30. Epichlorohydrin*. National Institute for Occupational Safety and Health. <http://www.cdc.gov/niosh/7910530.html>.
- NIOSH. 1990. *National Occupational Exposure Survey (1981-83)*. National Institute for Occupational Safety and Health. Last updated: 7/1/90. <http://www.cdc.gov/noes/noes1/29010sic.html>.
- Stephenson RL, Murphy DC, Habes DJ. 1981. *HHE Report No. HETA-81-466-1591, Electric Machinery - McGraw Edison Company, Minneapolis, Minnesota*. Health Hazard Evaluation Report [Abstract]. National Institute for Occupational Safety and Health. <http://www2a.cdc.gov/hhe/select.asp?PjtName=7008&bFlag=0&ID=5>.
- Stoner GD, Conran PB, Greisiger EA, Stober J, Morgan M, Pereira MA. 1986. Comparison of two routes of chemical administration on the lung adenoma response in strain A/J mice. *Toxicol Appl Pharmacol* 82(1): 19-31.
- TRI. 2009. TRI Explorer Chemical Report. U.S. Environmental Protection Agency. <http://www.epa.gov/triexplorer> and select Epichlorohydrin. Last accessed: 5/19/09.
- Tsai SP, Gilstrap EL, Ross CE. 1996. Mortality study of employees with potential exposure to epichlorohydrin: a 10 year update. *Occup Environ Med* 53(5): 299-304.
- USITC. 2009. *USITC Interactive Tariff and Trade DataWeb*. United States International Trade Commission. http://dataweb.usitc.gov/scripts/user_set.asp and search on HTS no. 2910300000.
- USITC. 2018. *USITC Interactive Tariff and Trade DataWeb*. United States International Trade Commission. http://dataweb.usitc.gov/scripts/user_set.asp and search on HTS no. 2910300000.
- Wester PW, Van der Heijden CA, Bisschop A, Van Esch GJ. 1985. Carcinogenicity study with epichlorohydrin (CEP) by gavage in rats. *Toxicology* 36(4): 325-339.